

READ ME !

Thank you for purchasing a Front Runner Land Rover Defender 90 / 110 Ladder.

Before you start, take a moment to familiarize yourself with the Fitting Instructions and the components received.

Refer to Page 2 for a list of all the components, quantities and tools required.

IMPORTANT WARNING!

IT IS CRITICAL THAT ALL FRONT RUNNER PRODUCTS BE PROPERLY AND SECURELY ASSEMBLED AND ATTACHED TO YOUR VEHICLE. IMPROPER ATTACHMENT COULD RESULT IN AN AUTOMOBILE ACCIDENT, AND COULD CAUSE SERIOUS BODILY INJURY OR DEATH. YOU ARE RESPONSIBLE FOR ASSEMBLING AND SECURING ALL FRONT RUNNER PRODUCTS TO YOUR VEHICLE, CHECKING THE ATTACHMENTS PRIOR TO USE, AND PERIODICALLY INSPECTING THE PRODUCTS FOR ADJUSTMENT, WEAR AND DAMAGE. THEREFORE, YOU MUST READ AND UNDERSTAND ALL OF THE INSTRUCTIONS AND PRECAUTIONS SUPPLIED WITH YOUR FRONT RUNNER PRODUCT PRIOR TO INSTALLATION OR USE. IF YOU DO NOT UNDERSTAND ALL OF THE INSTRUCTIONS AND CAUTIONS, OR IF YOU HAVE NO MECHANICAL EXPERIENCE AND ARE NOT THOROUGHLY FAMILIAR WITH THE INSTALLATION PROCEDURES, YOU SHOULD HAVE THE PRODUCT INSTALLED BY A PROFESSIONAL INSTALLER OR OTHER QUALIFIED PERSONNEL.

NOTE: Front Runner will not be responsible for any damage caused by the failure to install the product according to these instructions.

Please call us if you have any questions about the installation of this product.

1

GET ORGANIZED

IN THE BOX

1	1 X	Ladder Side - LH
2	1 X	Ladder Side - RH
3	1 X	Ladder Top
4	1 X	Clamp
5	3 X	Ladder Rung
6	1 X	Bottom Step
7	1 X	Support Bracket
8	12 X	M6 x 12 Button Head Screw
9	24 X	M6 x 12 x 1SS Flat Washer
10	24 X	M6 Nyloc Nut
11	3 X	M10 x 30 x 3 SS Flat Washer
12	2 X	M10 x 80 Hex Head Bolt
13	2 X	M6 x 19 x 1 SS Flat Washer
14	1 X	M10 Flat Washer
15	1 X	Spacer
16	2 X	M10 Nyloc Nut
17	24 X	M6 Nut Cap
18	2 X	M8 Nut Cap
19	2 X	M8 x 35 Hex Head Bolt
20	2 X	M8 x 16 x 1.6SS Flat Washer

IN THE BOX

21	2 X	M6 x 60 Cap Screw
22	4 X	PVC Washer
23	2 X	M8 x 25 x 2 SS Flat Washer
24	2 X	M8 Nyloc Nut
25	2 X	M6 Spring Washer
26	8 X	M6 x 16 Button Head Screw
27	1 X	M10 x 100 Hex Head Bolt

TOOLS NEEDED

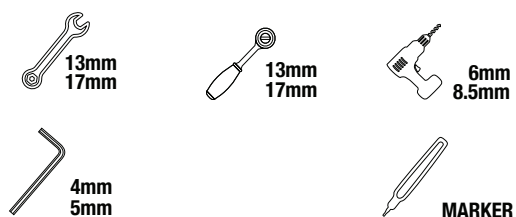
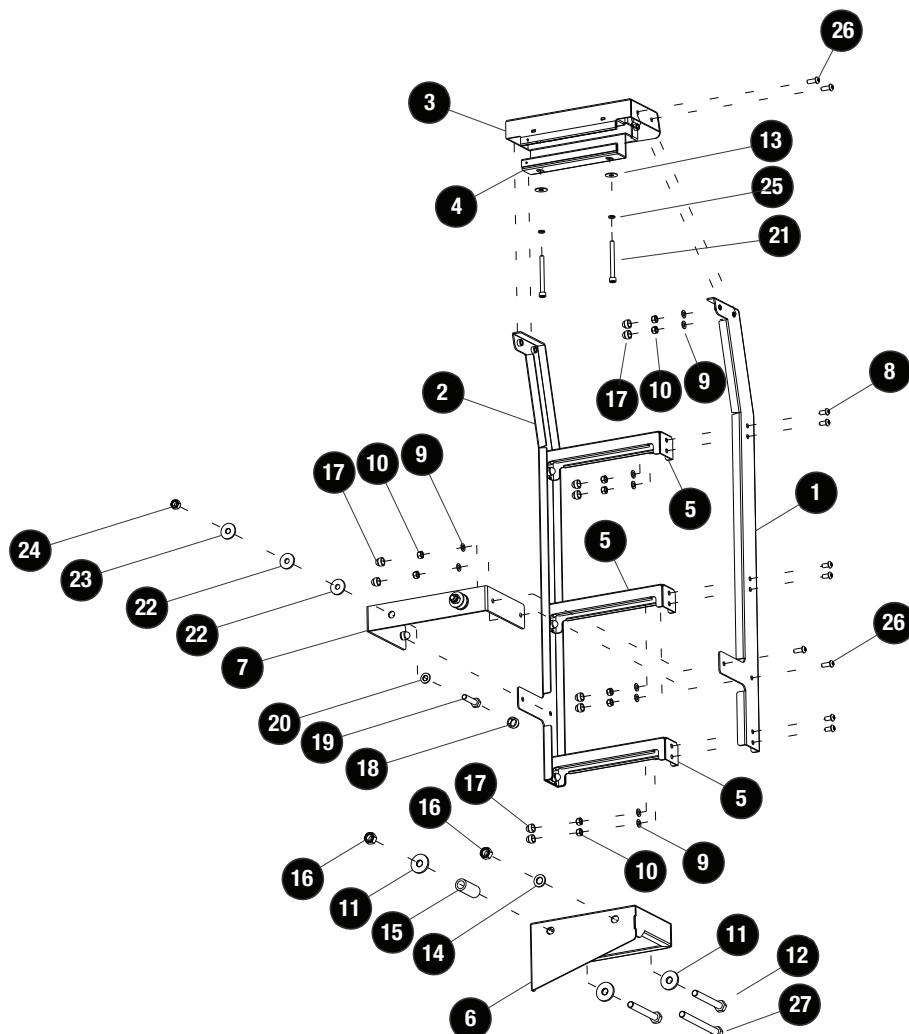
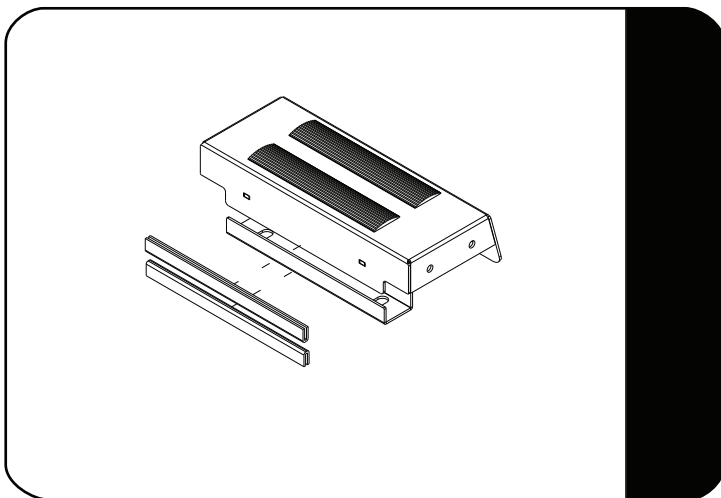


FIGURE 1.1

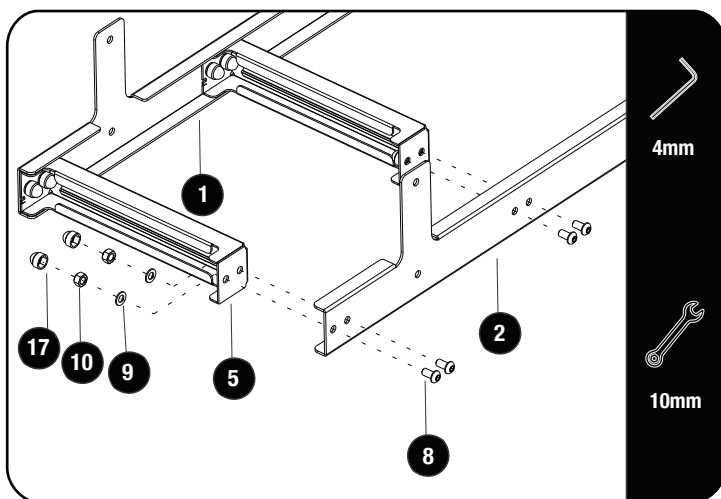


2.1



Ensure that the Pinch Weld are assembled onto the edges of the Ladder Top and the Clamp as shown.

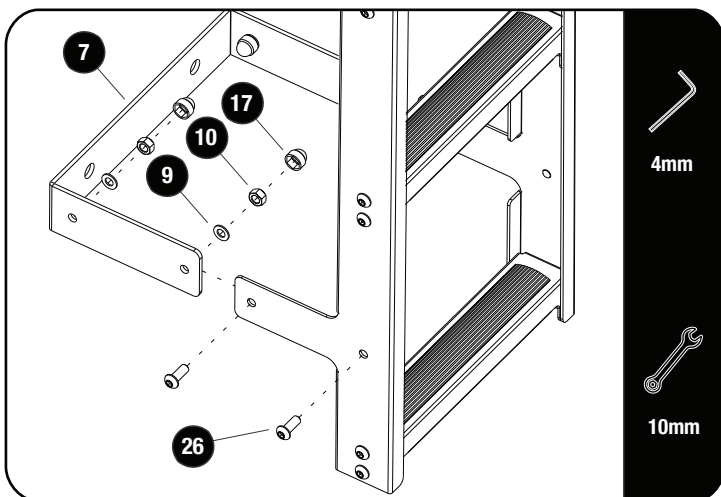
2.2



Assemble the three Ladder Rungs (Item 5) to the Ladder Sides (Items 1 & 2) using M6 x 12 Button Head Bolts, M6 x 12 x 1SS Flat Washers and M6 Nyloc Nuts (Items 8, 9 & 10) as shown.

Place M6 Nut Caps (Item 17) on all the Nyloc Nuts.

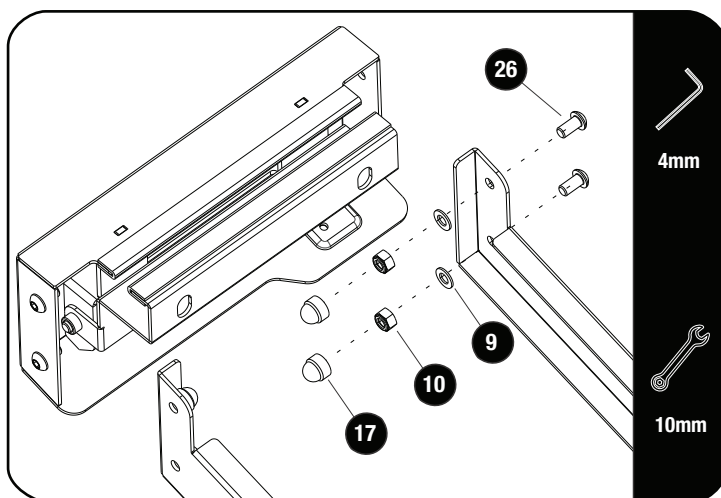
2.3



Assemble the Support Bracket (Item 7) to the Ladder Sides using M6 x 16 Button Head Bolts, M6 x 12 x 1SS Flat Washers and M6 Nyloc Nuts (Items 9, 10 & 26) as shown.

Place M6 Nut Caps (Item 17) on all the Nyloc Nuts.

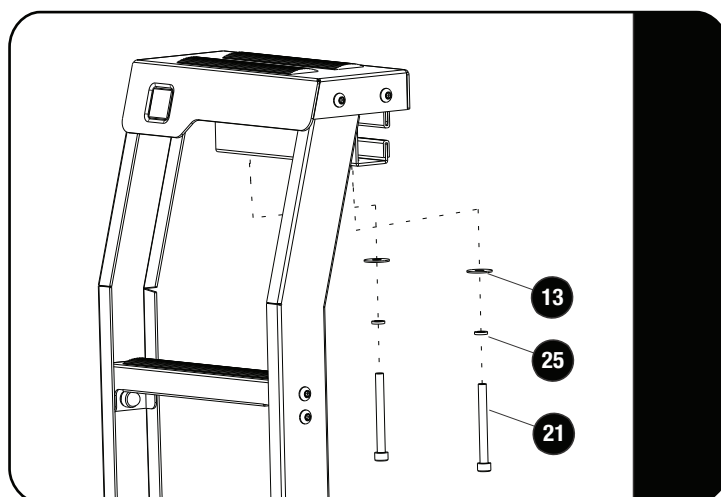
2.4



Assemble the Ladder Top Assembly from 2.1 to the Ladder Sides using M6 x 16 Button Head Bolts, M6 x 12 x 1SS Flat Washers and M6 Nyloc Nuts (Items 9, 10 & 26) as shown.

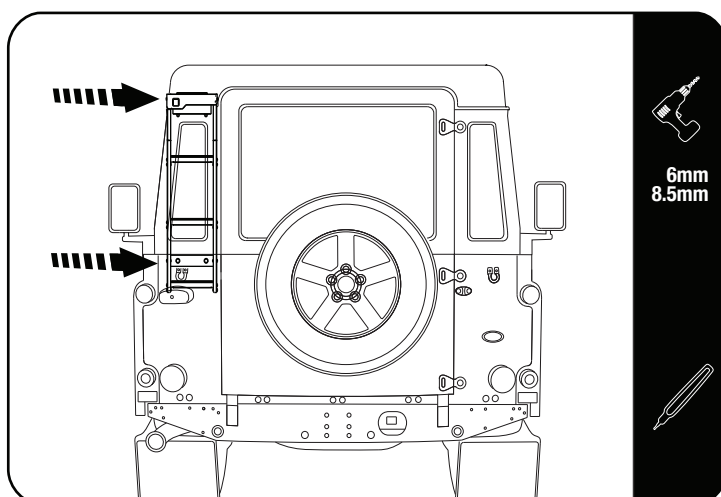
Place M6 Nut Caps (Item 17) on all the Nyloc Nuts.

2.5



Loosely insert two M6 x 60 Cap Screws with M6 SS Spring Washers and M6 x 19 x 1SS Flat Washers (Items 13, 21 & 25) through the Clamp (Item 4) into the Ladder Top (Item 3) as shown.

2.6



Swing open the Clamp. Fit the top assembly into vehicle's gutter.

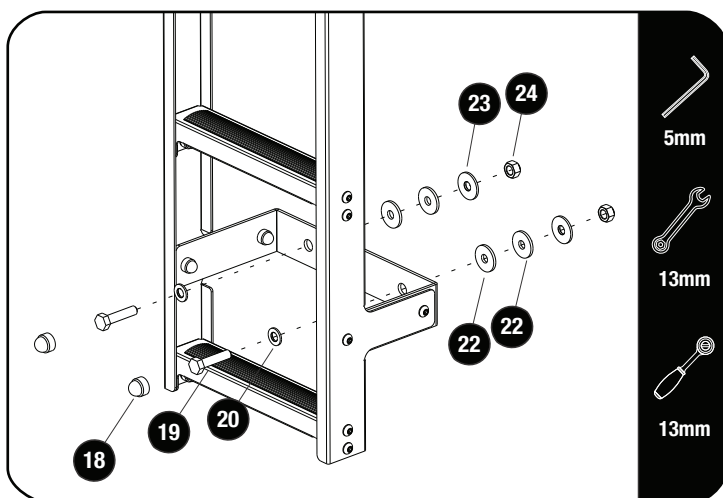
Align the Ladder with the edge of the door.

Inside the vehicle, remove the rear left window cover and speaker box.

Check door clearance and make sure the ladder is aligned straight with the door.

Mark the bottom two holes of the Ladder on the vehicle's body and remove the Ladder. Using a drill machine and a 6mm drill bit, drill two pilot holes on your markings. Change to a 8.5mm drill bit and drill the holes to 8.5mm.

2.7



Place the ladder back onto the vehicle and line up the holes in the bottom of the Ladder with the holes drilled in 2.6.

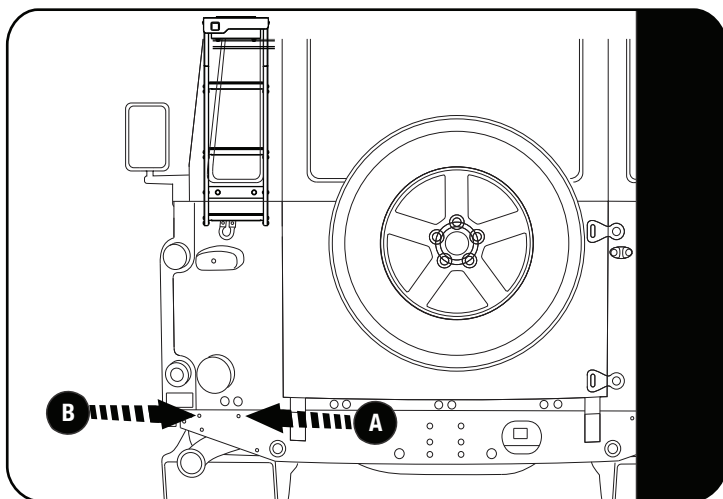
Insert two M8 x 35 Hex Bolts and two M8 Flat washers (Item 19 & 20) through the holes in the Ladder. Place two M8 PVC Flat Washers (Item 22) over each bolt between the vehicle and the Ladder. Secure on the inside of the vehicle using two M8 Flat Washers and two M8 Nyloc Nuts (Item 23 & 24).

Fully tighten the two M6 x 60 Cap Screw clamping the Ladder to the gutter.

Refit the rear window and speaker box cover removed in 2.6.

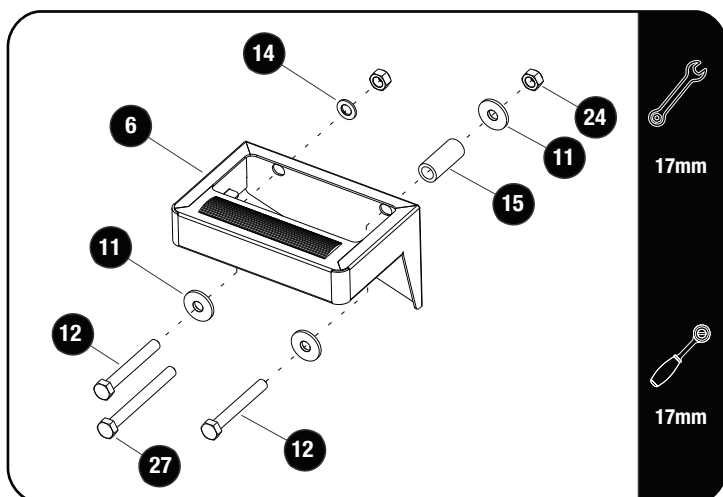
Place M8 Nut Caps (Item 18) on the bolt heads.

2.8



Remove the two original bolts from the bumper and place the Bottom step (Item 6) against the body, and align with the two holes in the bumper as shown.

2.9



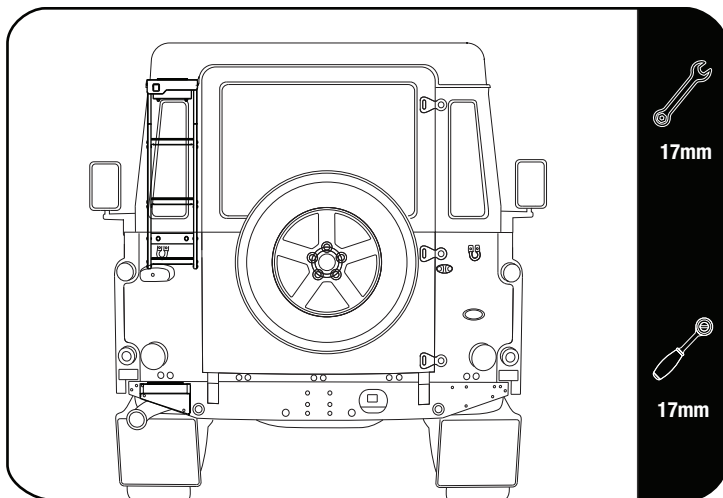
Refer to 2.9 and insert the M10 x 80 Hex Bolt with a M10 x 30 x 3 Flat Washer (Item 11 & 12) into the right hole marked "A". Behind the bumper insert the Spacer (Item 15) between the bumper and the "Tab" attached to the body/bumper. Guide the Hex Bolt through the Spacer and loosely fasten using a M10 x 30 x 3 Flat Washer and M10 Nyloc Nut (Item 11 & 24).

For the left side marked "B", insert the M10 x 80 Hex Bolt and M10 x 30 x 3 Flat Washer (Item 11 & 12) and loosely fasten using a M10 Flat Washer and M10 Nyloc Nut (Item 14 & 24). If the original bolt went through the chassis and the seat belt support bar, use the M10 x 100 Hex Bolt (Item 27).

3

FIT AND SECURE

2.10



Align the Bottom step and Fully tighten all bolts.

3

FINISH

Congratulations! You did it. Take a step back and admire your work!

4

INSTALL OTHER VEHICLE AND RACK ACCESSORIES

Now's the time to visit your favorite Front Runner Dealer in person or online.

Be sure to tag us. We love to see our gear in action! #FrontRunnerOutfitters #BornToRoam

Share your adventures on:

