

READ ME !

Thank you for purchasing a Front Runner Ford Ranger T6.2 (2022-Current) Load Bed Rack Mounting System.
Before you start, take a moment to familiarize yourself with the Fitting Instructions and the included components.
Refer to Page 2 for a list of all the components, quantities and tools required.

IMPORTANT WARNING!

IT IS CRITICAL THAT ALL FRONT RUNNER PRODUCTS BE PROPERLY AND SECURELY ASSEMBLED AND ATTACHED TO YOUR VEHICLE. IMPROPER ATTACHMENT COULD RESULT IN AN AUTOMOBILE ACCIDENT, AND COULD CAUSE SERIOUS BODILY INJURY OR DEATH. YOU ARE RESPONSIBLE FOR ASSEMBLING AND SECURING ALL FRONT RUNNER PRODUCTS TO YOUR VEHICLE, CHECKING THE ATTACHMENTS PRIOR TO USE, AND PERIODICALLY INSPECTING THE PRODUCTS FOR ADJUSTMENT, WEAR AND DAMAGE. THEREFORE, YOU MUST READ AND UNDERSTAND ALL OF THE INSTRUCTIONS AND PRECAUTIONS SUPPLIED WITH YOUR FRONT RUNNER PRODUCT PRIOR TO INSTALLATION OR USE. IF YOU DO NOT UNDERSTAND ALL OF THE INSTRUCTIONS AND CAUTIONS, OR IF YOU HAVE NO MECHANICAL EXPERIENCE AND ARE NOT THOROUGHLY FAMILIAR WITH THE INSTALLATION PROCEDURES, YOU SHOULD HAVE THE PRODUCT INSTALLED BY A PROFESSIONAL INSTALLER OR OTHER QUALIFIED PERSONNEL.

NOTE: Front Runner will not be responsible for any damage caused by the failure to install the product according to these instructions.
Please call us if you have any questions about the installation of this product.



1 GET ORGANIZED

IN THE BOX

- 1 1 X Right Hand Side Rail
- 2 1 X Left Hand Side Rail
- 3 1 X Rear Bracket RHS
- 4 2 X M8 x 16 x 1.6 Flat Washer
- 5 12 X M6 x 19 x 1 Flat Washer
- 6 2 X M8 x 225 Button Head Screw
- 7 16 X M6 x 16 Button Head Screw
- 8 1 X Rear Bracket LHS
- 9 2 X Center Mounting Bracket
- 10 4 X M 8 x 30 Button Head Screw
- 11 2 X Protector Plate
- 12 4 X M6 x 20 Button Head Screw
- 14 1 X Front Gusset LHS
- 15 1 X Front Gusset RHS
- 16 1 X Front Corner Support LHS

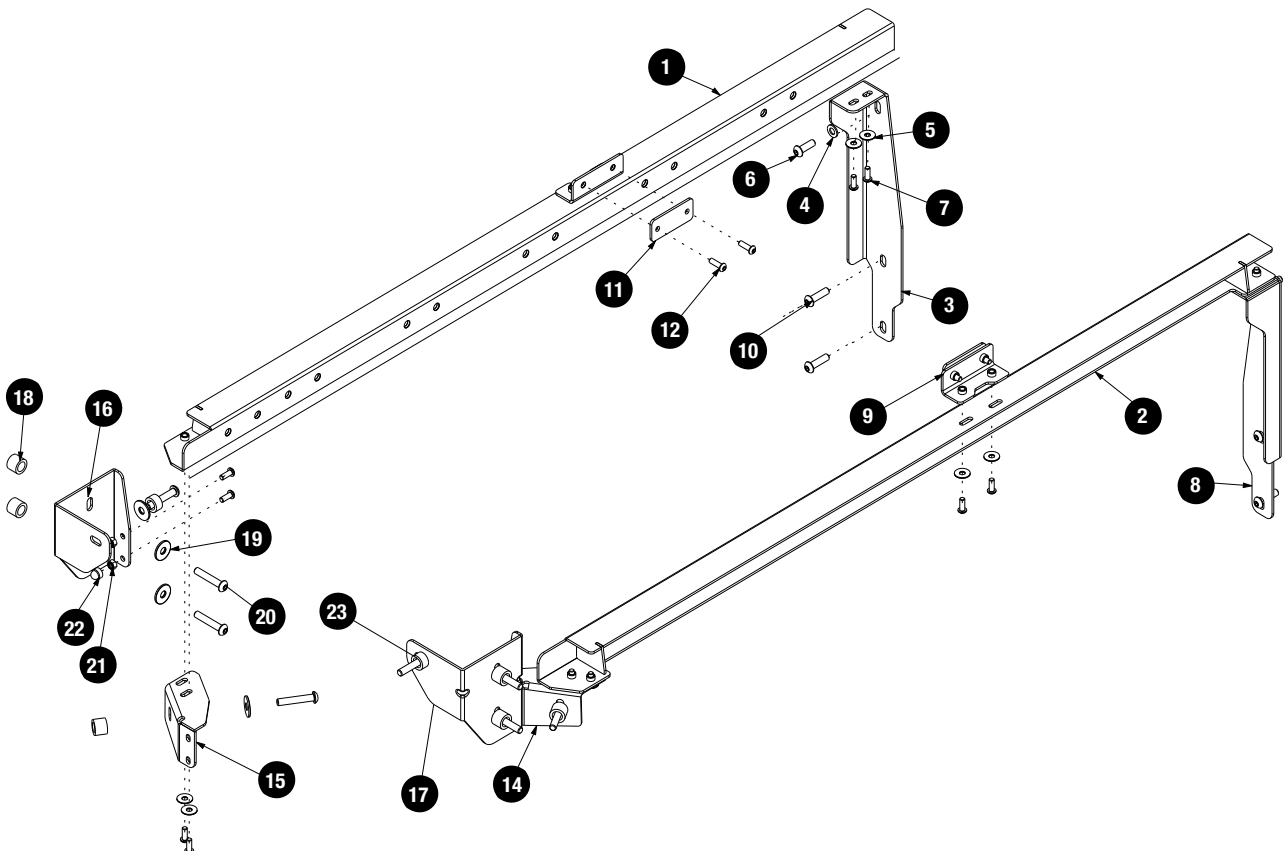
IN THE BOX

- 17 1 X Front Corner Support RHS
- 18 6 X Space 19 x 12.5 x15
- 19 8 X M8 x 25 x 2 Flat Washer
- 20 8 X M8 x 45 Button Head Screw
- 21 4 X M6 Nyloc Nut
- 22 4 X M6 Nut Cap
- 23 2 X Spacer 19 x 12.58 x 10

TOOLS NEEDED



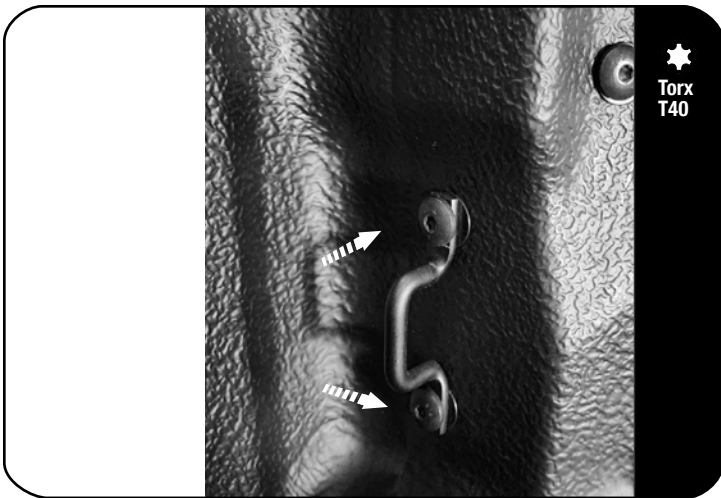
FIGURE 1.1



2

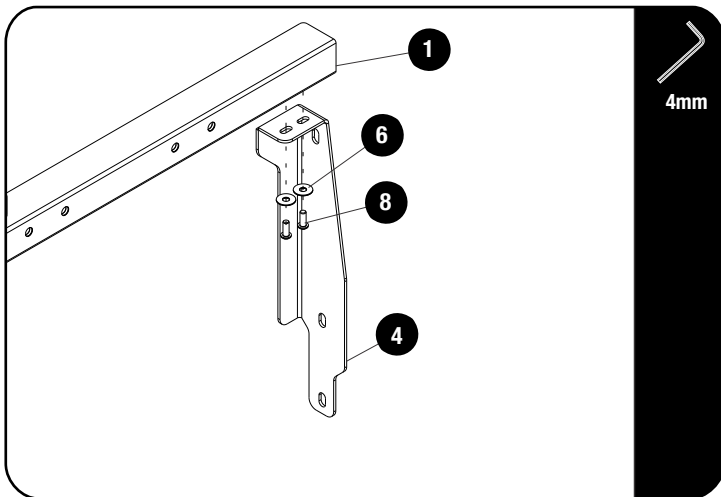
FIT AND SECURE

2.1



Remove the 8 T40 Torx bolts holding the front and rear tie down point to your vehicle.

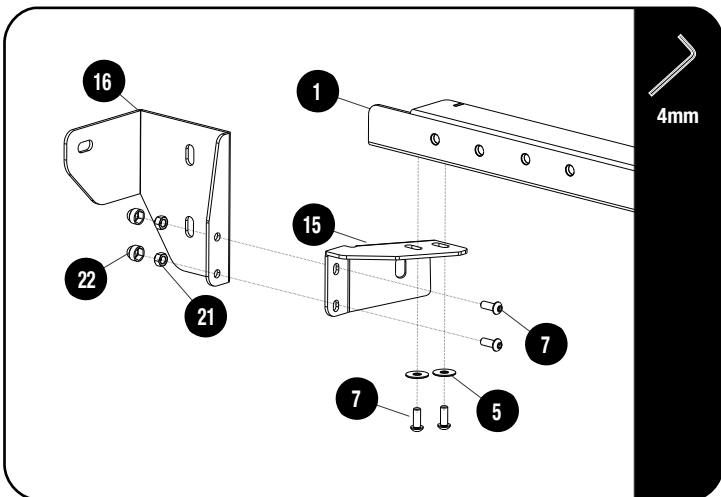
2.2



Loosely assemble the Right Hand Side REAR Bracket (Item 4) and the Right Hand Side Rail (Item 1) using M6 x 16 Button Head Screws (Item 8) and M6 x 12 x 1 Flat Washer (Item 6)

Do the same for the left hand side.

2.3



Loosely assemble the Right Hand Side FRONT Bracket (Item 15) and the Right Hand Side Rail (Item 1) using M6 x 16 Button Head Screws (Item 7) and M6 x 19 x 1 Flat Washer (Item 5).

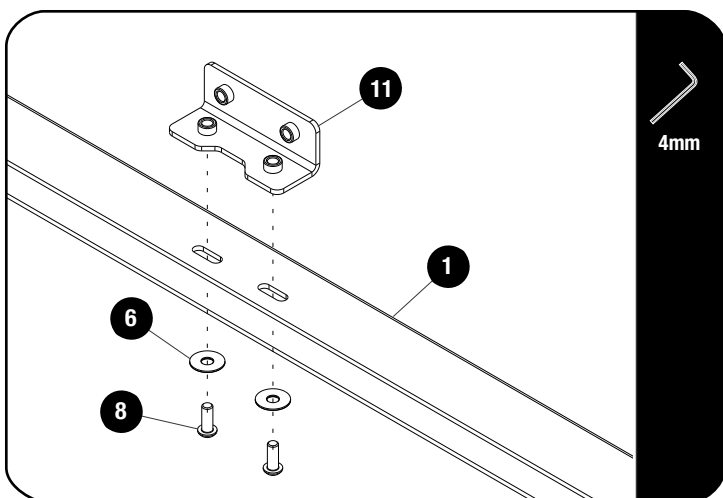
Loosely assemble the Right Hand Front Corner Support Bracket (Item 16) to the Right Hand Side FRONT Bracket (Item 15) using M6 x 16 Button Head Screws (Item 7) and M6 Nyloc Nut (Item 21).

DO NOT FULLY TIGHTEN.

Do the same for the left hand side.

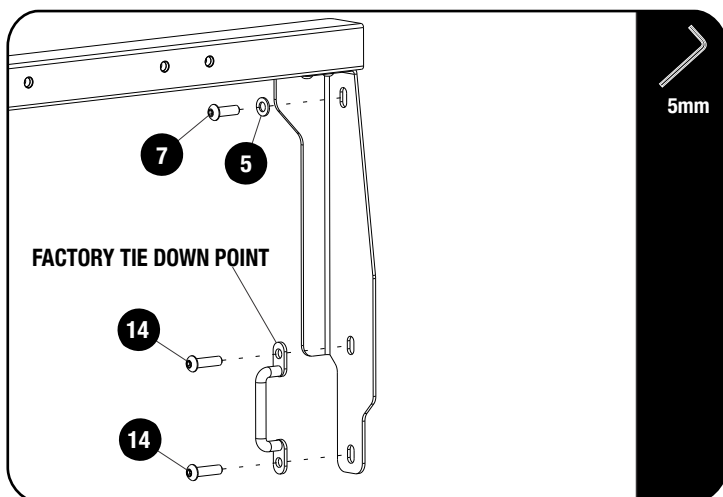
2**FIT AND SECURE**

2.4



- Loosely assemble the Center Bracket (Item 11) to your Right Hand Side Rail (Item 1) using M6 x 16 Button Head Screw (Item 8) and M6 x 12 x 1 Flat Washer (Item 6)
- Do the same for the left hand side.

2.5

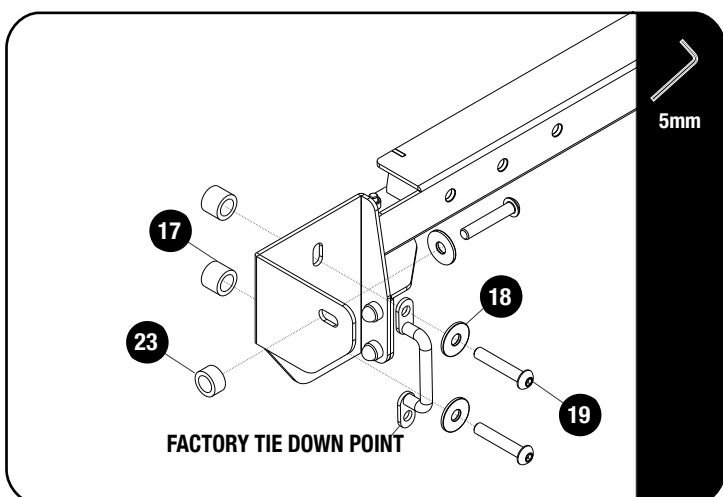


- Loosely bolt the REAR brackets you assembled in step 2.2 to the mounting holes where you removed the tie down point in the rear using M8 x 35 Button Head Screws (Item 14), M8 x 25 Button Head Screw (Item 7) and M8 x 16 x 1.6 Flat Washer (Item 5).
- Do this for both Left Hand Side and Right Hand Side.



Remember to reinstall your tie down point using the new hardware

2.6



- Loosely bolt the assembled FRONT brackets you assembled in step 2.3 to the mounting holes where you removed the tie down point in the front using M8 x 45 Button Head Screws (Item 19) M8 x 25 x 2 Flat Washer (Item 18) and 19 x 12.5 x 15 Spacer (Item 17) and M8 x 45 Button Head Screws (Item 19) M8 x 25 x 2 Flat Washer (Item 18) and 19 x 12.58 x 10 Spacer (Item 23).
- Do this for both the Left Hand Side and Right Hand Side.

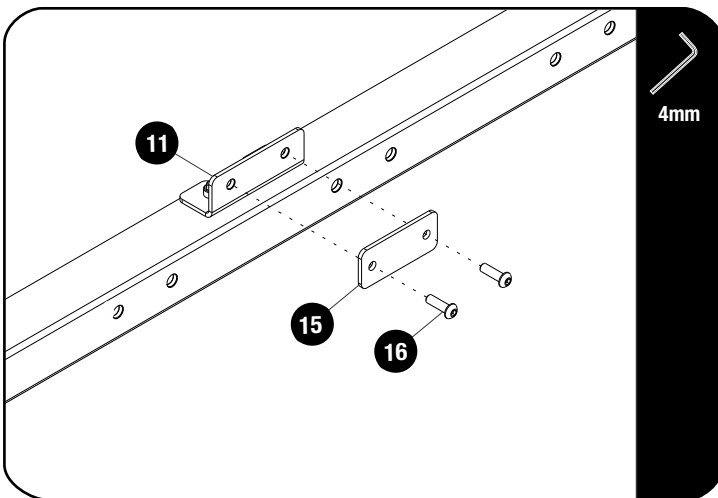



Remember to reinstall your tie down point using the new hardware

2

FIT AND SECURE

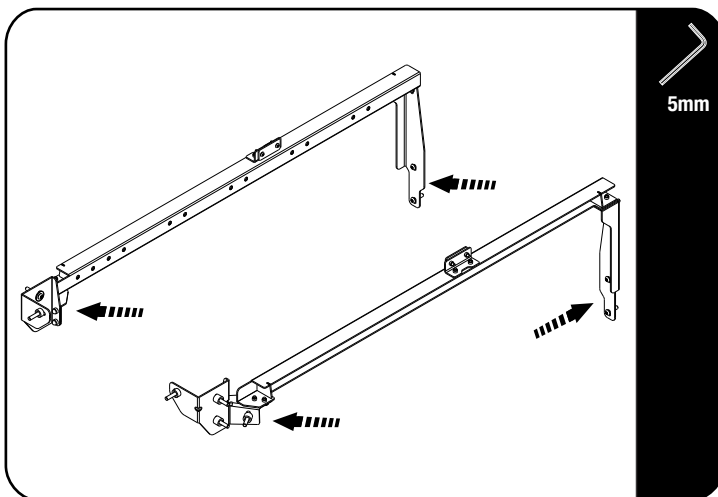
2.7



 Bolt the protector plate (Item 15) to the Center Bracket (Item 11) using the M6 x 20 Button Head Bolts (Item 16).

Do the same for the left hand side.

2.8



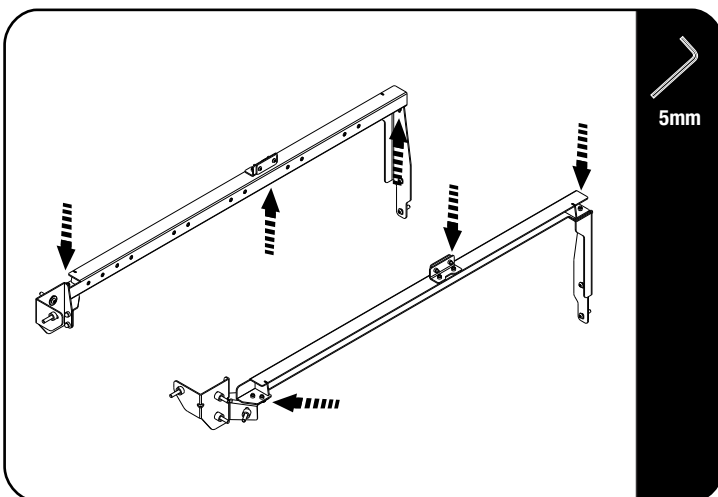
 Fully tighten all the bolts left loose in the previous steps (STEP 2.5 and STEP 2.6) as shown.




Tightening Torque:

M8 : 15-20Nm / 11.06 ft lb - 14.75 ft lb

2.9



 Fully tighten all the bolts left loose in the previous steps (STEP 2.2, STEP 2.3, STEP 2.4, STEP 2.8 and STEP 2.9) as shown.



Tightening Torque:

M6 : 8-10Nm / 5.9 ft lb - 7.38 ft lb

3

FINISH

Congratulations! You did it. Take a step back and admire your work!

4

INSTALL OTHER VEHICLE AND RACK ACCESSORIES

Now's the time to visit your favorite Front Runner Dealer in person or online.

Be sure to tag us. We love to see our gear in action! #FrontRunnerOutfitters #BornToRoam

Share your adventures on: 