

## READ ME !

Thank you for purchasing a Front Runner Toyota 4Runner 6th Gen Ladder.  
Before you start, take a moment to familiarize yourself with the Fitting Instructions and the included components.  
Refer to Page 2 for a list of all the components, quantities and tools required.

## IMPORTANT WARNING!

IT IS CRITICAL THAT ALL FRONT RUNNER PRODUCTS BE PROPERLY AND SECURELY ASSEMBLED AND ATTACHED TO YOUR VEHICLE. IMPROPER ATTACHMENT COULD RESULT IN AN AUTOMOBILE ACCIDENT, AND COULD CAUSE SERIOUS BODILY INJURY OR DEATH. YOU ARE RESPONSIBLE FOR ASSEMBLING AND SECURING ALL FRONT RUNNER PRODUCTS TO YOUR VEHICLE, CHECKING THE ATTACHMENTS PRIOR TO USE, AND PERIODICALLY INSPECTING THE PRODUCTS FOR ADJUSTMENT, WEAR AND DAMAGE. THEREFORE, YOU MUST READ AND UNDERSTAND ALL OF THE INSTRUCTIONS AND PRECAUTIONS SUPPLIED WITH YOUR FRONT RUNNER PRODUCT PRIOR TO INSTALLATION OR USE. IF YOU DO NOT UNDERSTAND ALL OF THE INSTRUCTIONS AND CAUTIONS, OR IF YOU HAVE NO MECHANICAL EXPERIENCE AND ARE NOT THOROUGHLY FAMILIAR WITH THE INSTALLATION PROCEDURES, YOU SHOULD HAVE THE PRODUCT INSTALLED BY A PROFESSIONAL INSTALLER OR OTHER QUALIFIED PERSONNEL.

**NOTE:** Front Runner will not be responsible for any damage caused by the failure to install the product according to these instructions.  
Please call us if you have any questions about the installation of this product.



# 1 GET ORGANIZED

## IN THE BOX

1	1 X	Hinge Bracket
2	1 X	Top Step
3	2 X	M5 x 10 Button Head Bolt
4	2 X	M5 Nyloc Nut
5	2 X	Ladder Stringer - 1LH & 1 RH
6	1 X	Bottom Step
7	8 X	M6 x 16 Button Head Bolt
8	8 X	M6 Nyloc Nut
9	4 X	19 x 12.5 x 10 Alu Spacer
10	4 X	M8 x 30 Button Head Bolt
11	4 X	M8 Nyloc Nut
12	4 X	M8 Nut Cap
13	8 X	M6 Nut Cap
14	1 X	Bottom Mount
15	2 X	M6 x 25 Button Head Bolt
16	2 X	Ladder Rung
17	1 X	Hatch Rubber - U-Channel Rubber (180mm Long)
18	4 X	M6 x 25 Thread Forming Screw

## IN THE BOX

19	1 X	M6 x 30 Button Head Bolt
20	1 X	M6 x 12 x 1 Flat Washer
21	1 X	Jack Nut Tool
22	2 X	M6 Jack Nut - Large Flange
23	1 X	M8 x 45 Button Head Bolt

## TOOLS NEEDED

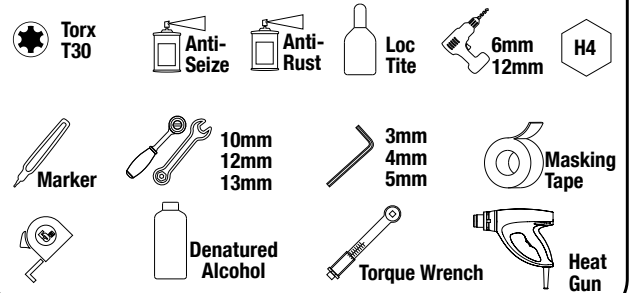


FIGURE 1.1

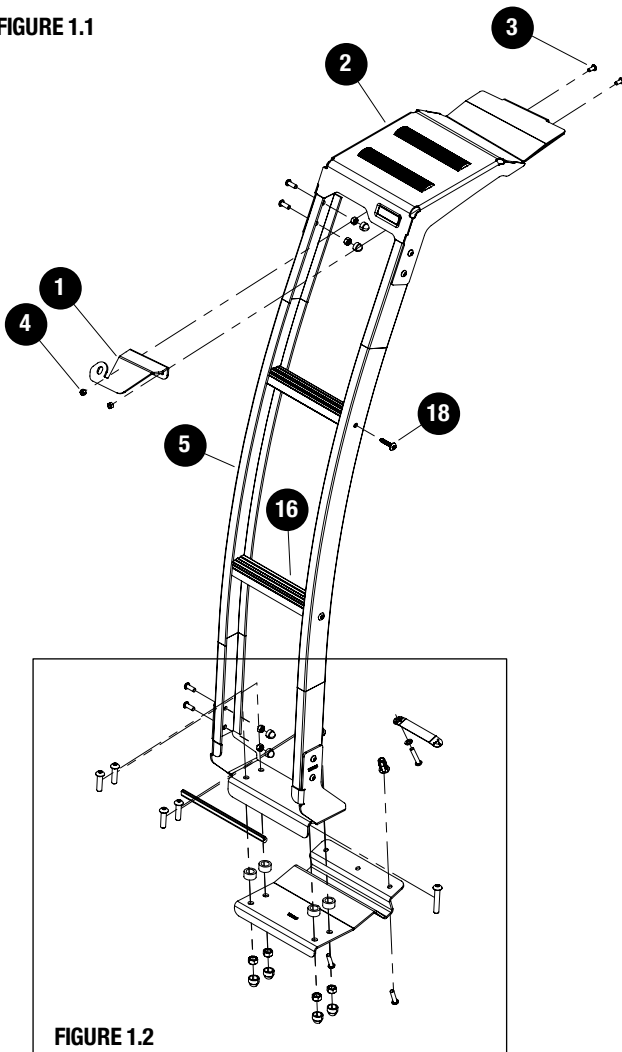
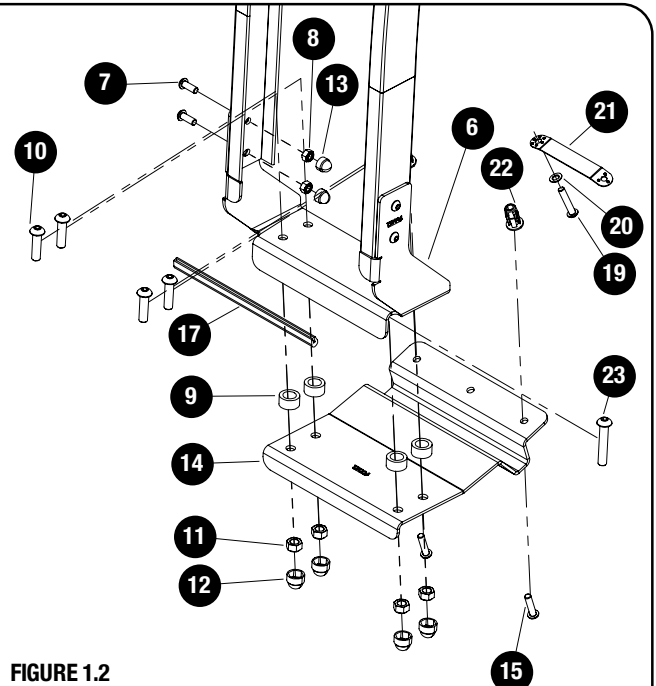


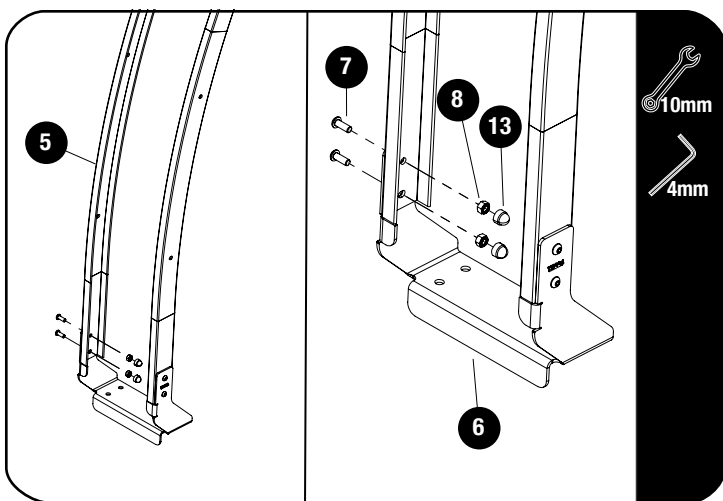
FIGURE 1.2



## 2

## FIT AND SECURE

2.1



Align the Bottom Step (Item 6) with the Ladder Stringers (LH & RH) (Item 5) and secure using four M6 x 16 Button Head Bolts and M6 Nyloc Nuts (Items 7 & 8).

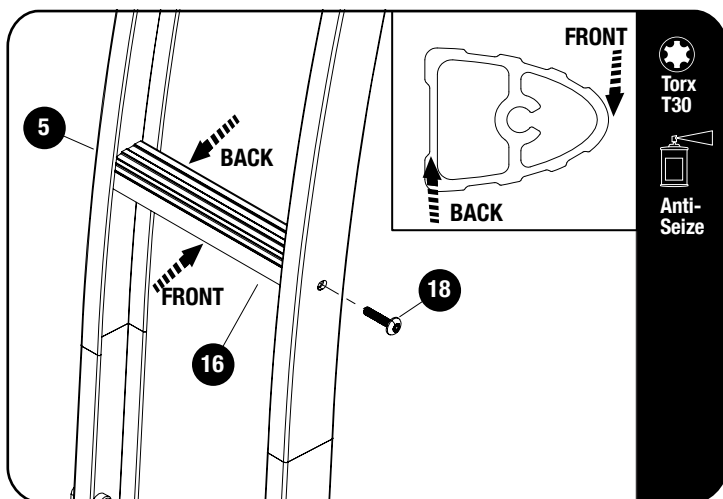
Tighten fasteners and place M6 Nut Caps (Item 13) on all Nyloc Nuts.



### Tightening Torque:

M6 : 8-10Nm / 5.9 ft lb - 7.38 ft lb

2.2



Apply a little Anti Seize / oil on Thread Forming Screws before inserting. Note these are thread forming screws.

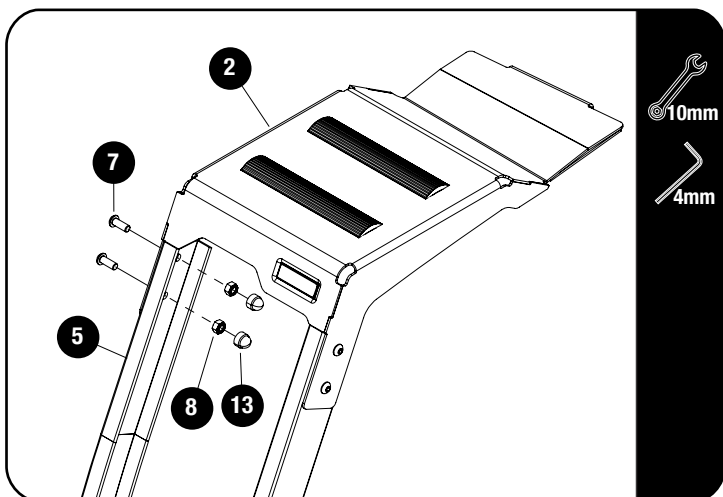


Secure two Ladder Rungs (Item 16) to the Ladder Stringers using M6 x 25 Thread Forming Screws (Item 18). Fully Tighten all Fasteners.



Tightening Torque 8-10Nm / 5.9 ft lb - 7.38 ft lb. Take care when using a cordless driver.

2.3



Position the Top Step (Item 2) and align the side holes with the holes in the Ladder Stringers (LH & RH) (Item 5) and secure using four M6 x 16 Button Head Bolts and M6 Nyloc Nuts (Items 7 & 8).

Tighten fasteners and place M6 Nut Caps (Item 13) on all Nyloc Nuts.



### Tightening Torque:

M6 : 8-10Nm / 5.9 ft lb - 7.38 ft lb

2

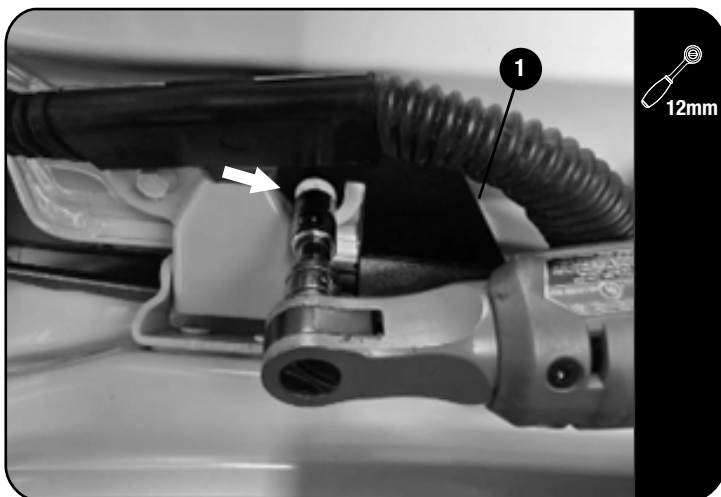
FIT AND SECURE

2.4



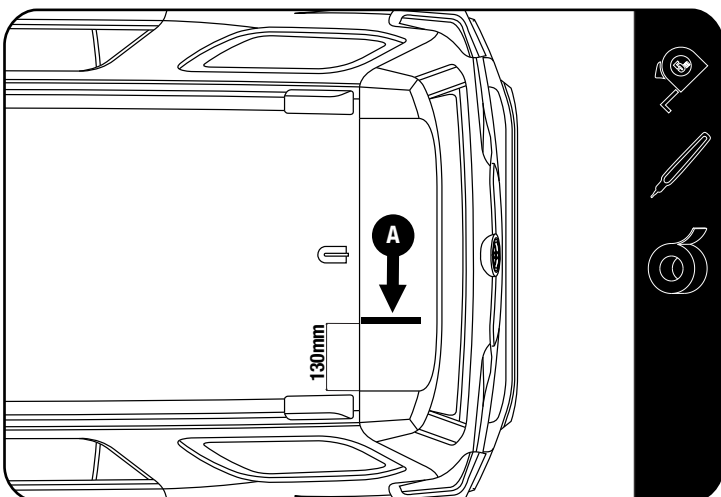
🔄 Locate the driver side rear door hinge and remove the right hand side bolt.

2.5



🔄 Position the Hinge Bracket (Item 1) over the hinge mounting hole and secure using the OEM Bolt removed in the previous step. Assemble tight enough to allow lining up with the Top Step.

2.6



🔄 On top of the rear hatch, measure 130mm from the left edge of the spoiler to help locate where the Top Step will be placed. Mark with masking tape (A) as shown.

2

FIT AND SECURE

2.7



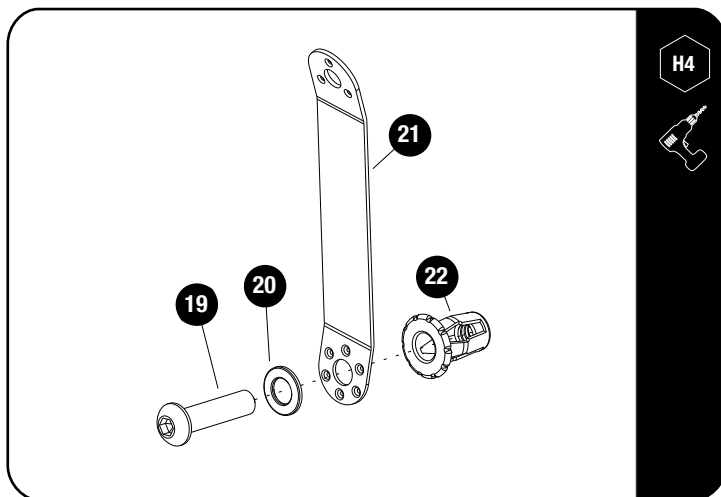
At the bottom of the rear hatch, mark 283mm from the left edge using masking tape.

Fit the U-Channel Rubber (Item 17) over the Door Edge. Position the Bottom Bracket (Item 14) over the edge as shown.

**NOTE:** The bracket must be positioned and rotated clockwise to allow the left edge to touch the inner face of the rubber U channel and the right-hand edge to touch the outer face of the rubber U channel.

Mark the hole centers of the two outer holes. Drill a 6mm Pilot hole and open up to 12mm. Apply Anti-Rust on drilled holes.

2.8



Insert the M6 x 30 Button Head Bolt (Item 19) and the M6 x 12 x 1 Flat Washer (Item 20) into the one side of the Jack Nut Tool (Item 21). Fit a Jack Nut (Item 22) to the Button Head Bolt as shown.

Using the Jack Nut Tool Assembly as mentioned above, insert a M6 Jack Nut into all holes opened in the previous step.

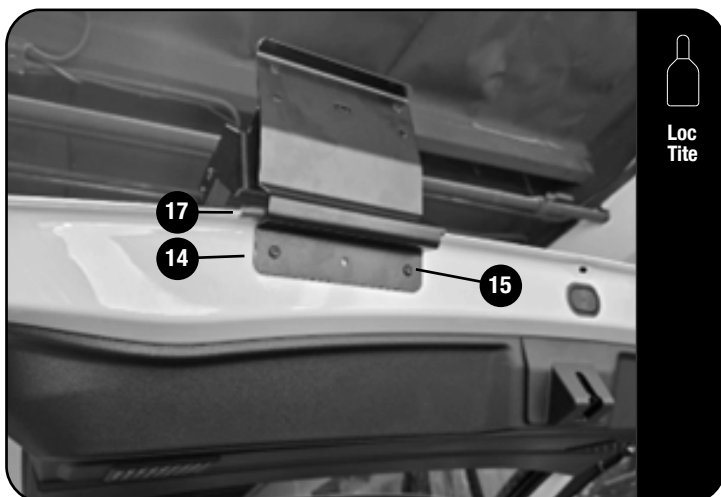
Using a Battery Powered Screw Driver and a H4 Allen Key Bit, set the Jack Nut into the hole while holding onto the handle of the Jack Nut Tool.



**Tightening Torque:**

M6 : 8-10Nm / 5.9 ft lb - 7.38 ft lb

2.9



With the M6 Jack Nuts installed, fit the Bottom Bracket (Item 14) using two M6 x 25 Button Head Bolts (Item 15).

Apply Loc Tite to bolts before securing.



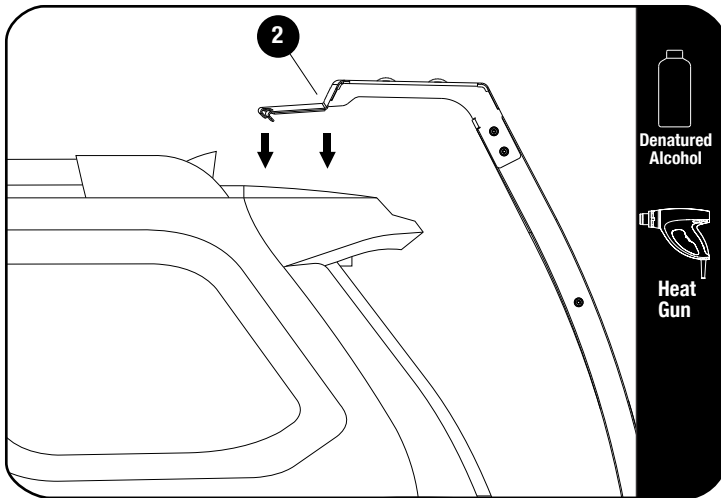
**Tightening Torque:**

M6 : 8-10Nm / 5.9 ft lb - 7.38 ft lb

2

FIT AND SECURE

2.10



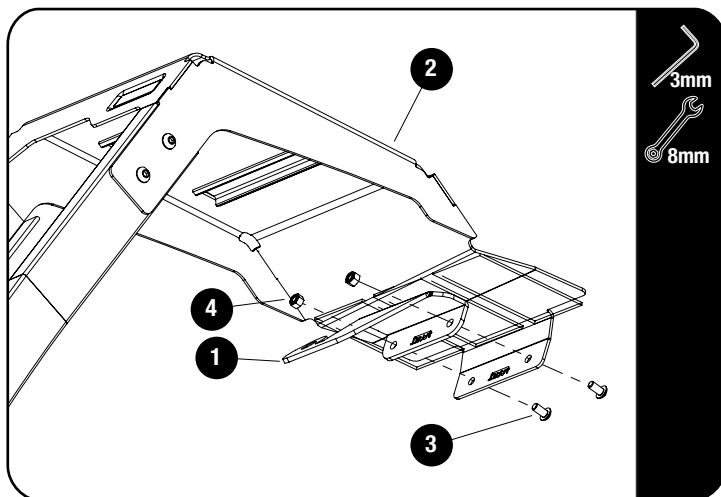
Clean the surface where the Top Step (Item 2) will be secured with denatured alcohol.

Remove the VHB backing and heat the VHB to increase adhesion especially in colder climates.

Align the top step left edge with the mark on the spoiler made in step 2.6.

Slowly lower the small bend of the Top Step in the gap between the spoiler and the vehicle roof, while lightly pulling backward, ensuring it is fully against the hatch lip. Press down firmly when in position.

2.11



Align and secure the Top Step (Item 2) to the Hinge Bracket (Item 1) using two M5 x 10 Button Head Bolts and two M5 Nyloc Nuts (Items 3 & 4).

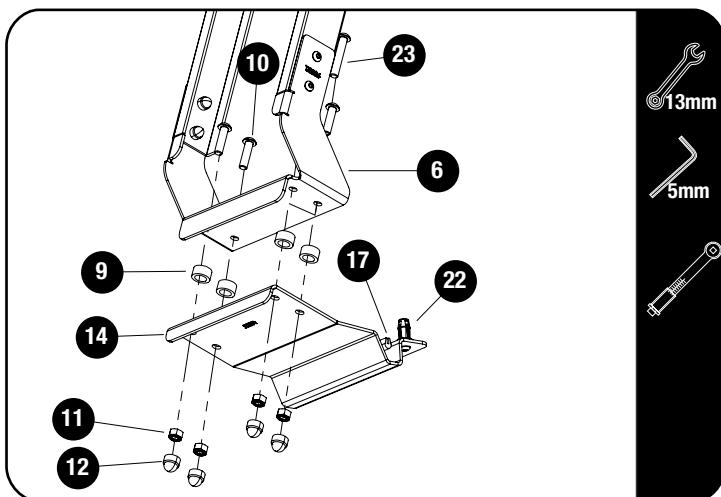
**NOTE:** With restricted access for tools, it is recommended to use a low profile 3mm Allen Key for this.



**Tightening Torque:**

M5 : 7Nm / 4.5 ft lbs

2.12



Secure the Ladder assembly to the Bottom Mount Bracket (Item 14) as shown.

Use the M8 x 45 Button Head Bolt (Item 23) and M8 Nyloc Nut (Item 11) in one of the back holes to start the clamping process, then use the M8 x 30 Button Head Bolts, M8 Nyloc Nuts and 10mm Aluminium Spacers, (Items 9, 10 & 11) in the other three holes. Remove the M8 x 45 Button Head Bolt and replace with the M8 x 30 Button Head Bolt.

Fully tighten and place M8 Nut Caps (Item 12) over M8 Nyloc Nuts.



**TIP:** Alternate between fasteners while tightening to pull the Ladder evenly.



**Tightening Torque:**

M8 : 15-20Nm / 11.06 ft lb - 14.75 ft lb

**3**

### **FINISH**

Congratulations! You did it. Take a step back and admire your work!

**4**

### **INSTALL OTHER VEHICLE AND RACK ACCESSORIES**

Now's the time to visit your favorite Front Runner Dealer in person or online.

**Be sure to tag us. We love to see our gear in action! #FrontRunnerOutfitters #BornToRoam**

**Share your adventures on:** 