**READ ME !** ⚠

Thank you for purchasing a Front Runner Axe Bracket

Before you start, take a moment to familiarize yourself with the Fitting Instructions and the components received.

Refer to Page 2 for a list of all the components, quantities and tools required.

**IMPORTANT WARNING!** ⚠

IT IS CRITICAL THAT ALL FRONT RUNNER PRODUCTS BE PROPERLY AND SECURELY ASSEMBLED AND ATTACHED TO YOUR VEHICLE. IMPROPER ATTACHMENT COULD RESULT IN AN AUTOMOBILE ACCIDENT, AND COULD CAUSE SERIOUS BODILY INJURY OR DEATH. YOU ARE RESPONSIBLE FOR ASSEMBLING AND SECURING ALL FRONT RUNNER PRODUCTS TO YOUR VEHICLE, CHECKING THE ATTACHMENTS PRIOR TO USE, AND PERIODICALLY INSPECTING THE PRODUCTS FOR ADJUSTMENT, WEAR AND DAMAGE. THEREFORE, YOU MUST READ AND UNDERSTAND ALL OF THE INSTRUCTIONS AND PRECAUTIONS SUPPLIED WITH YOUR FRONT RUNNER PRODUCT PRIOR TO INSTALLATION OR USE. IF YOU DO NOT UNDERSTAND ALL OF THE INSTRUCTIONS AND CAUTIONS, OR IF YOU HAVE NO MECHANICAL EXPERIENCE AND ARE NOT THOROUGHLY FAMILIAR WITH THE INSTALLATION PROCEDURES, YOU SHOULD HAVE THE PRODUCT INSTALLED BY A PROFESSIONAL INSTALLER OR OTHER QUALIFIED PERSONNEL.

**NOTE:** Front Runner will not be responsible for any damage caused by the failure to install the product according to these instructions.

Please call us if you have any questions about the installation of this product.

1

## GET ORGANIZED

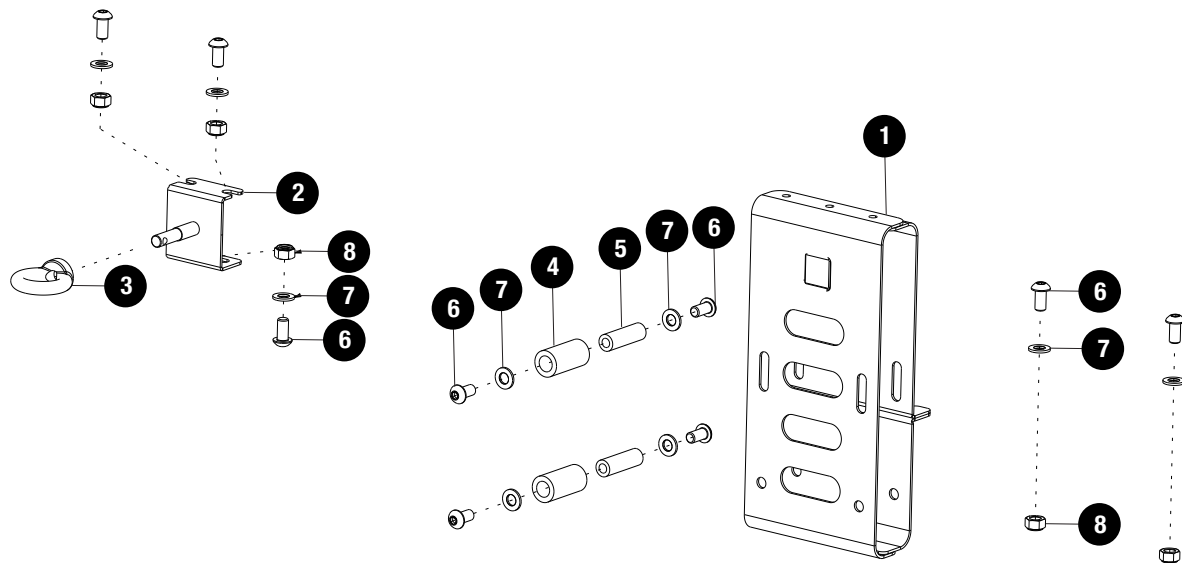
## IN THE BOX

1	1 X	Axe Bracket
2	1 X	Handle Bracket
3	1 X	M10 Eye Nut
4	2 X	Rubber Insert (13mm x 40mm Long)
5	2 X	M8 Aluminium Bush OD 12 x 40
6	9 X	M8 x 20 Button Head Bolt
7	9 X	M8 x 16 x 1.6SS Flat Washer
8	5 X	M8 Nyloc Nut

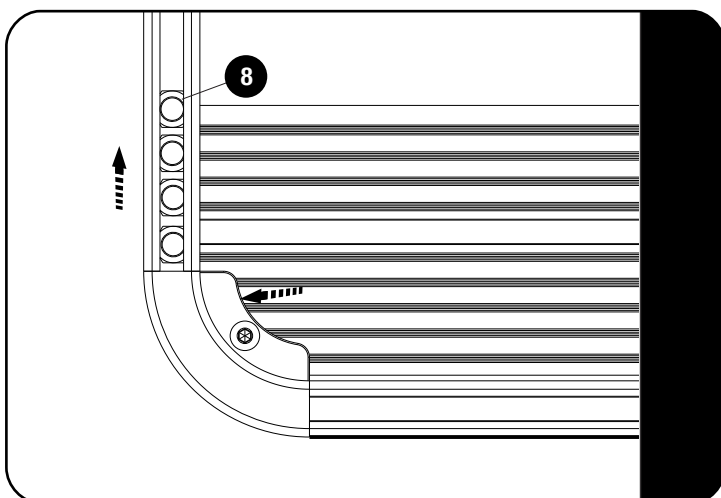
## TOOLS NEEDED



FIGURE 1.1



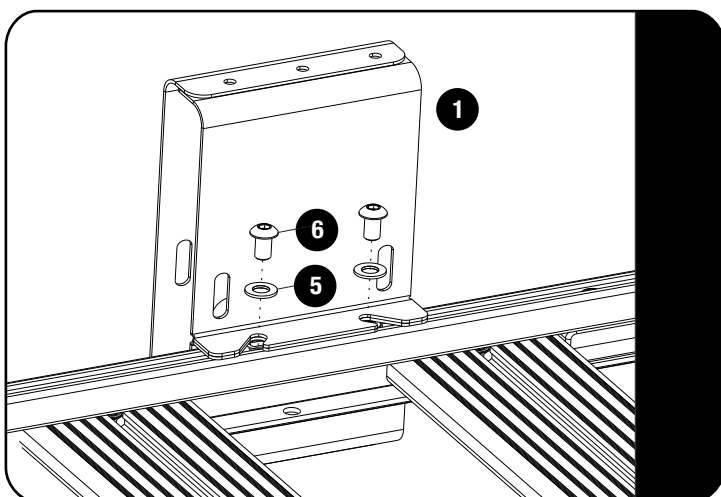
2.1



Decide where on your Rack you would like to mount your Axe.

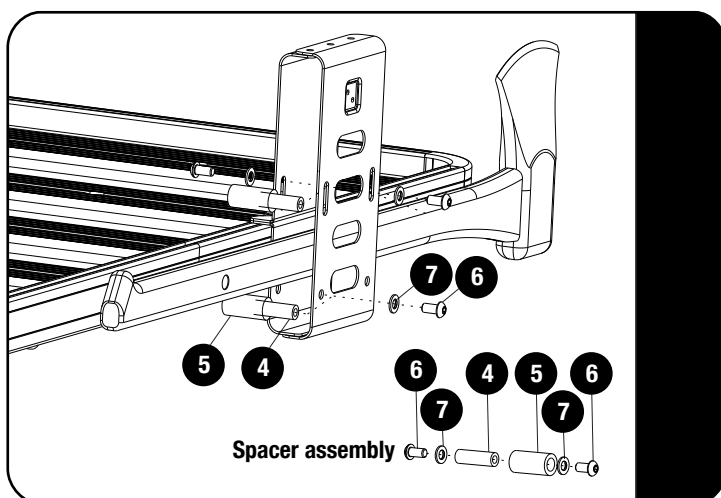
Slide 4 M8 Nyloc nuts (Item 8) into the T-Slot rail on the chosen side by pushing the nuts through the gap in the corner as indicated, 2 of the nuts will be used for the Head bracket and 2 for the handle bracket. The spacing of the Nuts and Brackets will depend on the length of your Axe.

2.2



Place the Head Bracket (Item 1) over the M8 Nyloc Nuts inserted in 2.1, using the M8 x 16 Button Head bolt together with the M8 Flat washer (Item 5 & 6) and hand tighten the M8 x 16 Button Head Bolt (The Bracket must be able to slide).

2.3



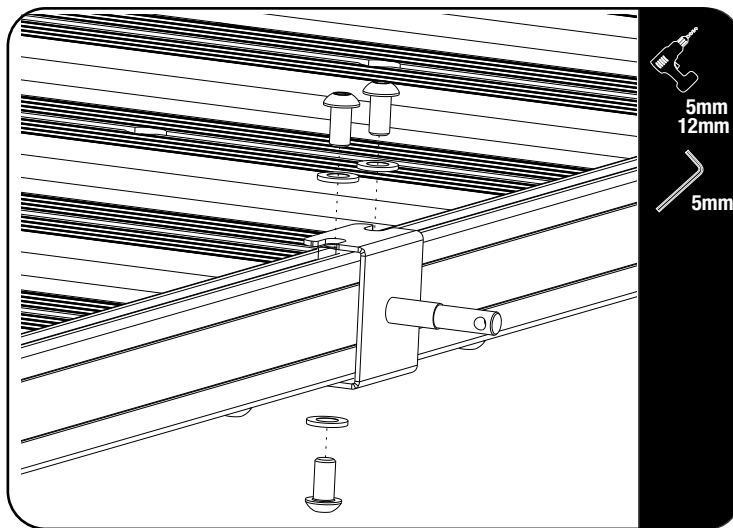
Depending on which side of the Head Bracket you would like the axe handle to exit, you may need to move the 2 spacer assemblies (one to & one bottom) to the opposite side.

The spacer assemblies must be on the same side the handle exits the bracket.

2

## FIT AND SECURE

2.1



⌚ The handle bracket mounts in between 2 slats and locates in-line with the bottom hole in the side profile. Slide the handle bracket between the M8 nyloc nuts inserted in 2.1 position the axe bracket to where you would like it mounted.

Tighten all the M8 x 16 button head bolts (Item 6).

Place the Axe against the handle bracket and mark the handle of the axe, use a 5mm drill bit to drill a pilot hole and open up to a 12mm hole.



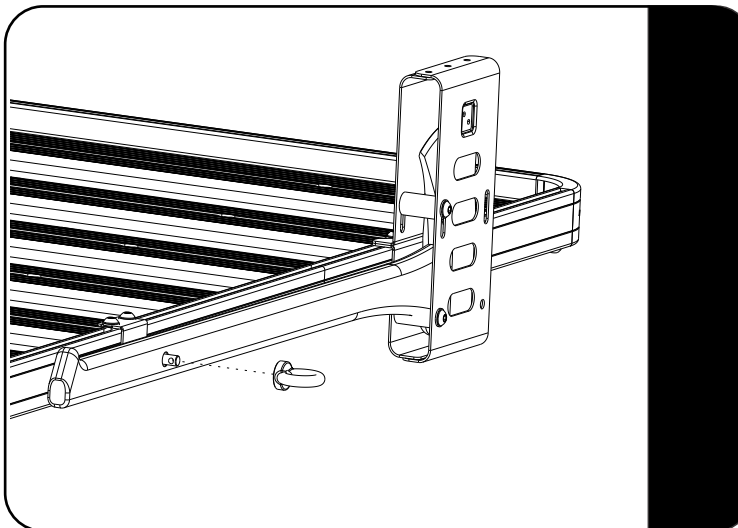
**Tip -** Drill the 12mm half way from the one side and then complete the 12mm hole from the other side - this will stop the wood splintering.



### Tightening Torque:

M8 : 15-20Nm / 11.06 ft lb - 14.75 ft lb

2.2



⌚ Once all the bolts are fully tightened place the M10 Eye nut onto the handle bracket and tighten.

3

## FINISH

Congratulations! You did it. Take a step back and admire your work!

4

## INSTALL OTHER VEHICLE AND RACK ACCESSORIES

Now's the time to visit your favorite Front Runner Dealer in person or online.

Be sure to tag us. We love to see our gear in action! #FrontRunnerOutfitters #BornToRoam

Share your adventures on:

