

READ ME !

Thank you for purchasing a Slimpro Van Rack Adjustable Wind Fairing.

Before you start, take a moment to familiarize yourself with the Fitting Instructions and the included components.

Refer to Page 2 for a list of all the components, quantities and tools required.

IMPORTANT WARNING!

IT IS CRITICAL THAT ALL FRONT RUNNER PRODUCTS BE PROPERLY AND SECURELY ASSEMBLED AND ATTACHED TO YOUR VEHICLE. IMPROPER ATTACHMENT COULD RESULT IN AN AUTOMOBILE ACCIDENT, AND COULD CAUSE SERIOUS BODILY INJURY OR DEATH. YOU ARE RESPONSIBLE FOR ASSEMBLING AND SECURING ALL FRONT RUNNER PRODUCTS TO YOUR VEHICLE, CHECKING THE ATTACHMENTS PRIOR TO USE, AND PERIODICALLY INSPECTING THE PRODUCTS FOR ADJUSTMENT, WEAR AND DAMAGE. THEREFORE, YOU MUST READ AND UNDERSTAND ALL OF THE INSTRUCTIONS AND PRECAUTIONS SUPPLIED WITH YOUR FRONT RUNNER PRODUCT PRIOR TO INSTALLATION OR USE. IF YOU DO NOT UNDERSTAND ALL OF THE INSTRUCTIONS AND CAUTIONS, OR IF YOU HAVE NO MECHANICAL EXPERIENCE AND ARE NOT THOROUGHLY FAMILIAR WITH THE INSTALLATION PROCEDURES, YOU SHOULD HAVE THE PRODUCT INSTALLED BY A PROFESSIONAL INSTALLER OR OTHER QUALIFIED PERSONNEL.

NOTE: Front Runner will not be responsible for any damage caused by the failure to install the product according to these instructions.

Please call us if you have any questions about the installation of this product.

1

GET ORGANIZED

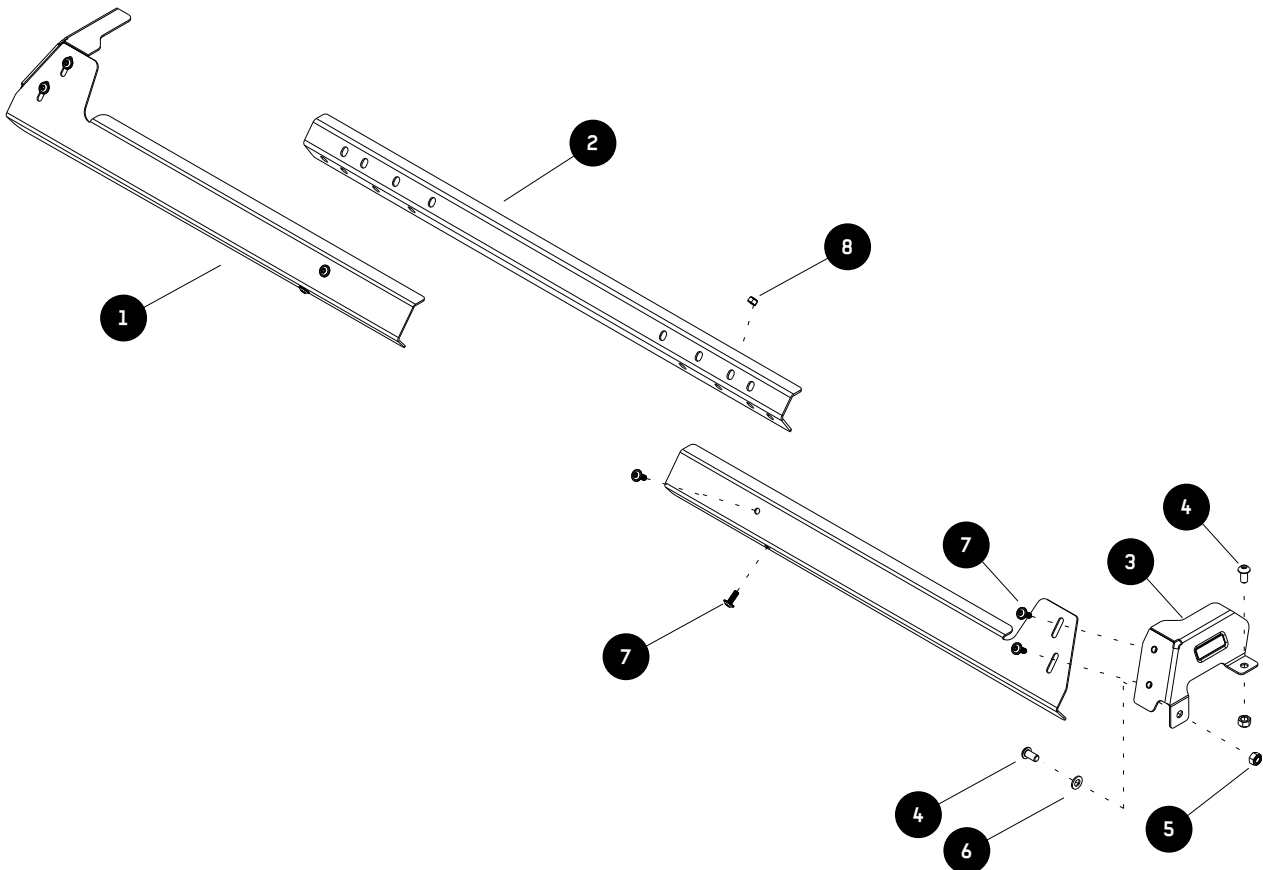
IN THE BOX

1	2 X	Wind Fairing - 1LH & 1RH
2	1 X	Fairing Brace
3	2 X	Mounting Bracket - 1LH & 1RH
4	4 X	M8 x 16 Button Head Bolt
5	4 X	M8 Nyloc Nut
6	2 X	M8 Flat Washer
7	8 X	M6 x 16 Flange Button Head Bolt
8	4 X	M6 Nyloc Nut

TOOLS NEEDED



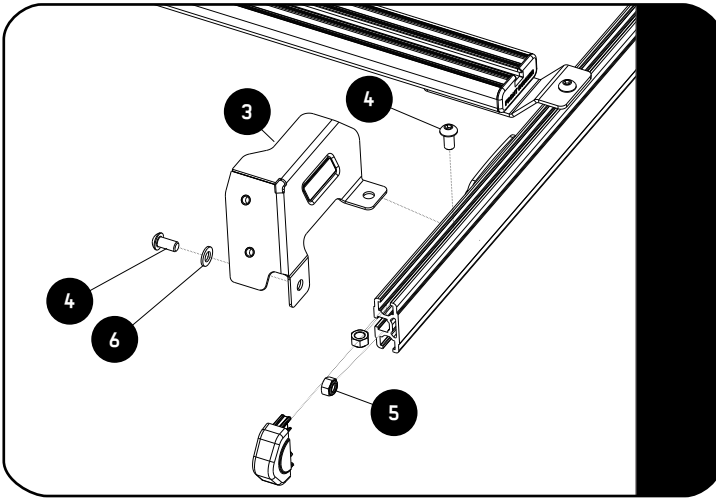
FIGURE 1.1



2

FIT AND SECURE

2.1

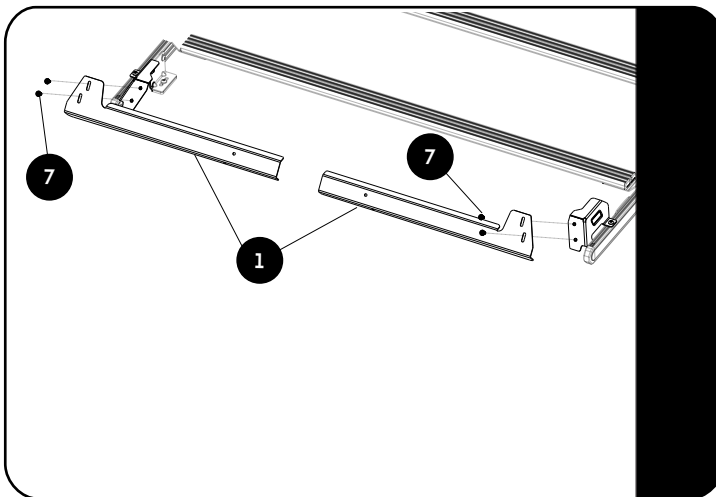


Start by Removing the Front End Cap from the Side Profile.

Slide the two M8 Nyloc Nuts (Item 5) into the top and middle slot of the Side Profile as shown.

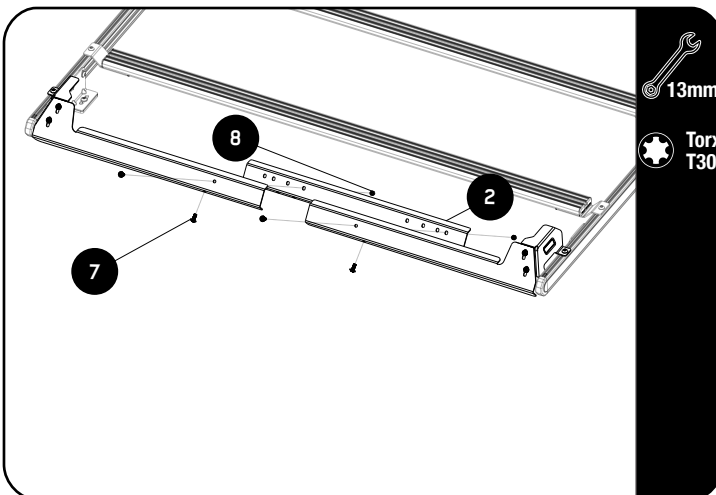
Loosely Assemble the Fairing Mounting Bracket (Item 3) using the M8 x 16 Button Head Screw and M8 Flat Washer (Item 4 & 6) on to the side of the Fairing Bracket and M8 x 16 Button Head Screw (Item 4) to the top of the Bracket. Do this Both LH and RH side.

2.2



Loosely Assemble the Wind Fairing (Item 1) using the M6 x 16 Flange Button Head Screw (Item 7) as shown. Do this Both LH and RH side. DO NOT FULLY TIGHTEN.

2.3



Assemble the Fairing Brace (Item 2) to the Wind fairing fitted in 2.2 using M6 x 16 Flange Button head bolts and M6 Nyloc Nuts (Item 7 & 8).

Fully Tighten the M6 x 16 Flange Button head bolts and M6 Nyloc Nuts.



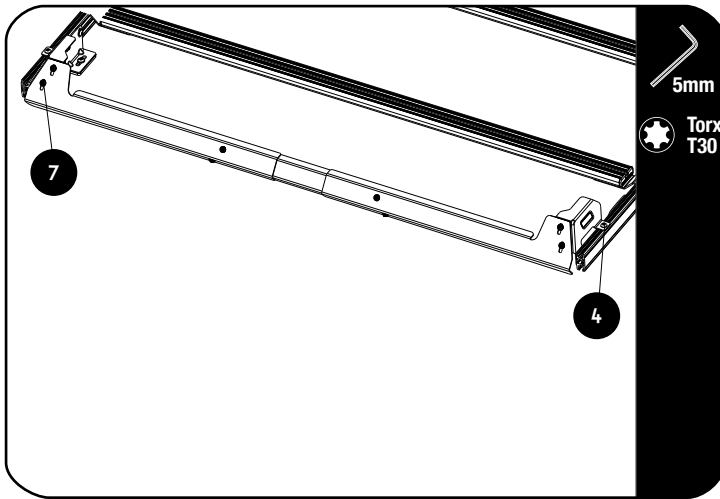
Tightening Torque:

M6 : 8-10Nm / 5.9 ft lb - 7.38 ft lb

2

FIT AND SECURE

2.4



🔄 Fully Tighten the M8 x 16 Button Head Screws (Item 4) fitted in 2.1

Fully Tighten the M6 x 16 Flange Button Head Bolts (Item 7) fitted in 2.2.



Tightening Torque:

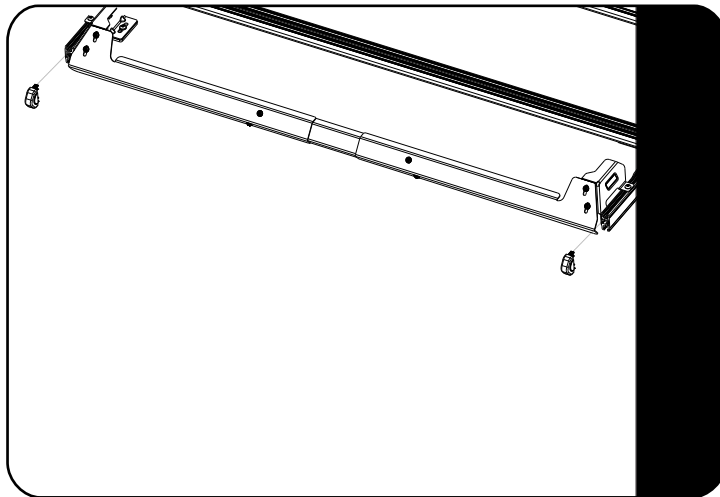
M8 : 15-20Nm / 11.06 ft lb - 14.75 ft lb



Tightening Torque:

M6 : 8-10Nm / 5.9 ft lb - 7.38 ft lb

2.5



Refit the end caps removed in 2.1.

3

FINISH

Congratulations! You did it. Take a step back and admire your work!

4

INSTALL OTHER VEHICLE AND RACK ACCESSORIES

Now's the time to visit your favorite Front Runner Dealer in person or online.

Be sure to tag us. We love to see our gear in action! #FrontRunnerOutfitters #BornToRoam

Share your adventures on:    