

READ ME !

Thank you for purchasing a Front Runner Under Console Safe.

Before you start, take a moment to familiarize yourself with the Fitting Instructions and the included components.

Refer to Page 2 for a list of all the components, quantities and tools required.

IMPORTANT WARNING!

IT IS CRITICAL THAT ALL FRONT RUNNER PRODUCTS BE PROPERLY AND SECURELY ASSEMBLED AND ATTACHED TO YOUR VEHICLE. IMPROPER ATTACHMENT COULD RESULT IN AN AUTOMOBILE ACCIDENT, AND COULD CAUSE SERIOUS BODILY INJURY OR DEATH. YOU ARE RESPONSIBLE FOR ASSEMBLING AND SECURING ALL FRONT RUNNER PRODUCTS TO YOUR VEHICLE, CHECKING THE ATTACHMENTS PRIOR TO USE, AND PERIODICALLY INSPECTING THE PRODUCTS FOR ADJUSTMENT, WEAR AND DAMAGE. THEREFORE, YOU MUST READ AND UNDERSTAND ALL OF THE INSTRUCTIONS AND PRECAUTIONS SUPPLIED WITH YOUR FRONT RUNNER PRODUCT PRIOR TO INSTALLATION OR USE. IF YOU DO NOT UNDERSTAND ALL OF THE INSTRUCTIONS AND CAUTIONS, OR IF YOU HAVE NO MECHANICAL EXPERIENCE AND ARE NOT THOROUGHLY FAMILIAR WITH THE INSTALLATION PROCEDURES, YOU SHOULD HAVE THE PRODUCT INSTALLED BY A PROFESSIONAL INSTALLER OR OTHER QUALIFIED PERSONNEL.

NOTE: Front Runner will not be responsible for any damage caused by the failure to install the product according to these instructions.

Please call us if you have any questions about the installation of this product.



1

GET ORGANIZED

IN THE BOX

1	1 X	Under Console Safe
2	3 X	M6 x 25 Countersink Bolt
3	3 X	M10 Flat Washer
4	4 X	M5 x 25 Button Head Bolt
5	4 X	M6 x 19 Flat Washer
6	1 X	Aluminium Spacer

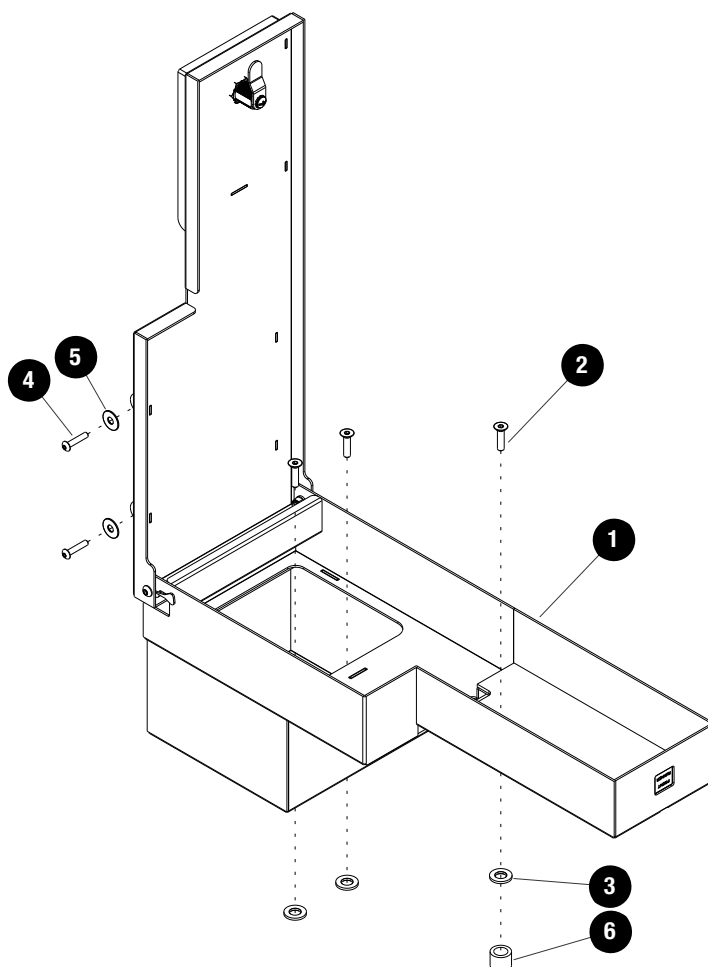
TOOLS NEEDED



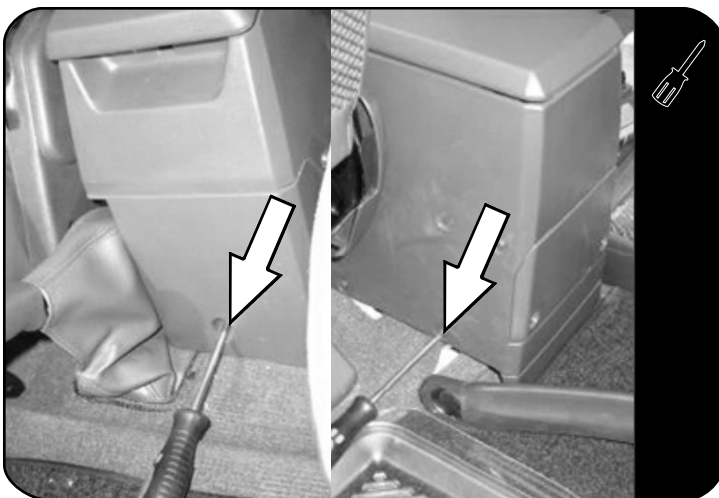
14mm


3mm
4mm

FIGURE 1.1



2.1




 Loosen the center console found between the driver and front passenger seat by removing the three bolts as indicated, one in the front and one either side on the rear.

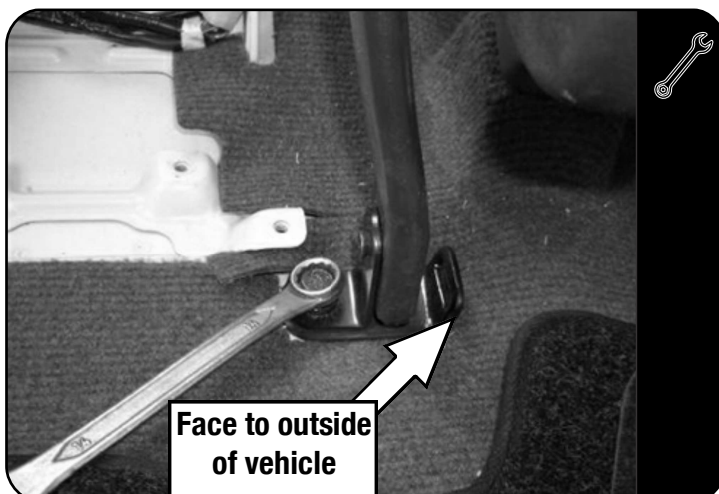
Remove the console from the vehicle.

2.2



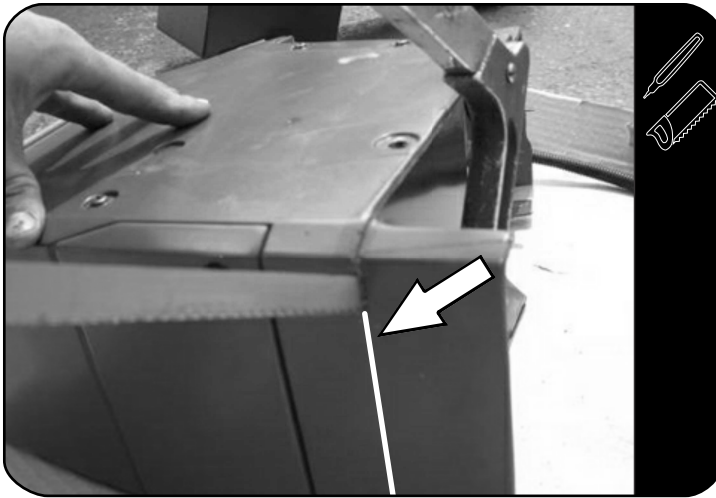
 Loosen and remove the original console mounting bracket. The two mounting points will be used later to secure the Safe to the vehicle.

2.3



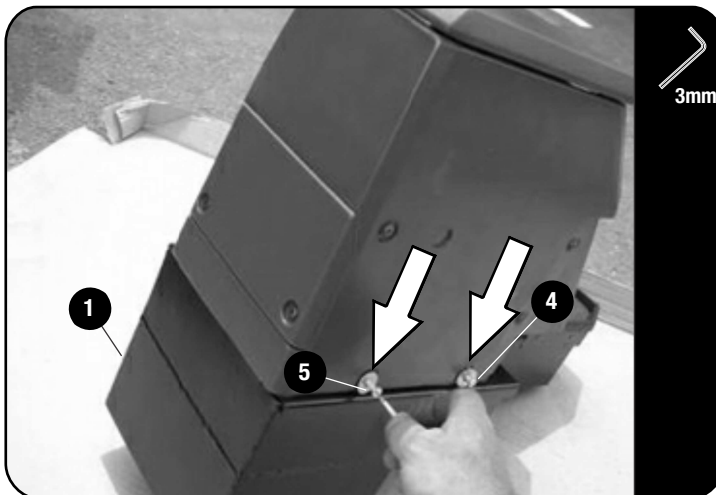
 Loosen and rotate the two seat belt brackets as shown.

2.4



Mark and cut the rear bottom section off the center console as shown.

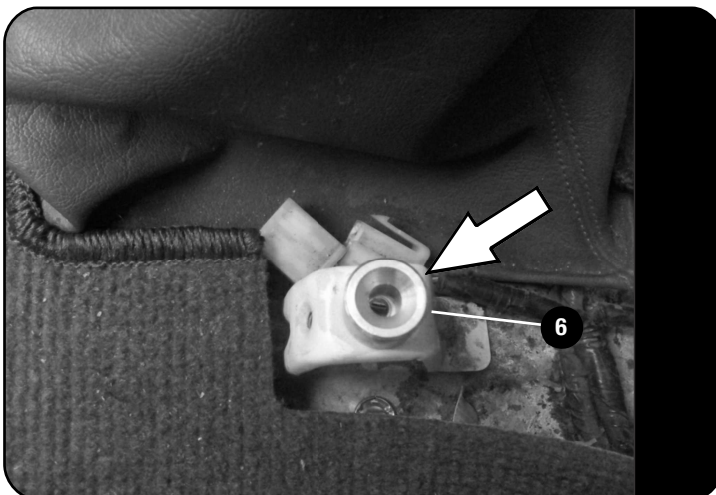
2.5



Place the center console over the Safe (Item 1) as show, lining up the holes in the side of the center console with the mounting points on the Safe.

Secure the console to the Safe using four M5 x 25 Button Head Bolts and four M6 x 16 Flat Washers (Items 4 & 5).

2.6



Locate the the front mounting point next to the vehicle's gear lever as indicated by the arrow and place the Aluminium Spacer (Item 6) supplied on top of the mounting point as shown.

2.7



Open the Safe and console assembly, remove the interior carpet and hidden compartment cover.

Place the Safe and console assembly into vehicle, lining up the the mounting holes in the floor of the Safe with the mounting points in the vehicle, two from Step 2.2 and one from Step 2.6. Take care that the Spacer remains in position.

Loosely secure the safe to the vehicle using the three M6 x 25 Countersunk Bolts and three M10 Flat Washers (Items 2 & 3) supplied. Open and close the Safe to ensure that the position is correct. Tighten all three bolts.

2.8



Refit the interior carpet and hidden compartment cover. Close the Safe, remove the key and place the supplied carpet over the lock and front section of the Safe as shown.

3

FINISH

Congratulations! You did it. Take a step back and admire your work!

4

INSTALL OTHER VEHICLE AND RACK ACCESSORIES

Now's the time to visit your favorite Front Runner Dealer in person or online.

Be sure to tag us. We love to see our gear in action! #FrontRunnerOutfitters #BornToRoam

Share your adventures on:

