

READ ME ! ⚠

Thank you for purchasing a Toyota 4Runner 5th GEN Exterior rear molle Panel LH

Before you start, take a moment to familiarize yourself with the Fitting Instructions and the included components.

Refer to Page 2 for a list of all the components, quantities and tools required.

IMPORTANT WARNING! ⚠

IT IS CRITICAL THAT ALL FRONT RUNNER PRODUCTS BE PROPERLY AND SECURELY ASSEMBLED AND ATTACHED TO YOUR VEHICLE. IMPROPER ATTACHMENT COULD RESULT IN AN AUTOMOBILE ACCIDENT, AND COULD CAUSE SERIOUS BODILY INJURY OR DEATH. YOU ARE RESPONSIBLE FOR ASSEMBLING AND SECURING ALL FRONT RUNNER PRODUCTS TO YOUR VEHICLE, CHECKING THE ATTACHMENTS PRIOR TO USE, AND PERIODICALLY INSPECTING THE PRODUCTS FOR ADJUSTMENT, WEAR AND DAMAGE. THEREFORE, YOU MUST READ AND UNDERSTAND ALL OF THE INSTRUCTIONS AND PRECAUTIONS SUPPLIED WITH YOUR FRONT RUNNER PRODUCT PRIOR TO INSTALLATION OR USE. IF YOU DO NOT UNDERSTAND ALL OF THE INSTRUCTIONS AND CAUTIONS, OR IF YOU HAVE NO MECHANICAL EXPERIENCE AND ARE NOT THOROUGHLY FAMILIAR WITH THE INSTALLATION PROCEDURES, YOU SHOULD HAVE THE PRODUCT INSTALLED BY A PROFESSIONAL INSTALLER OR OTHER QUALIFIED PERSONNEL.

NOTE: Front Runner will not be responsible for any damage caused by the failure to install the product according to these instructions.

Please call us if you have any questions about the installation of this product.

1

GET ORGANIZED

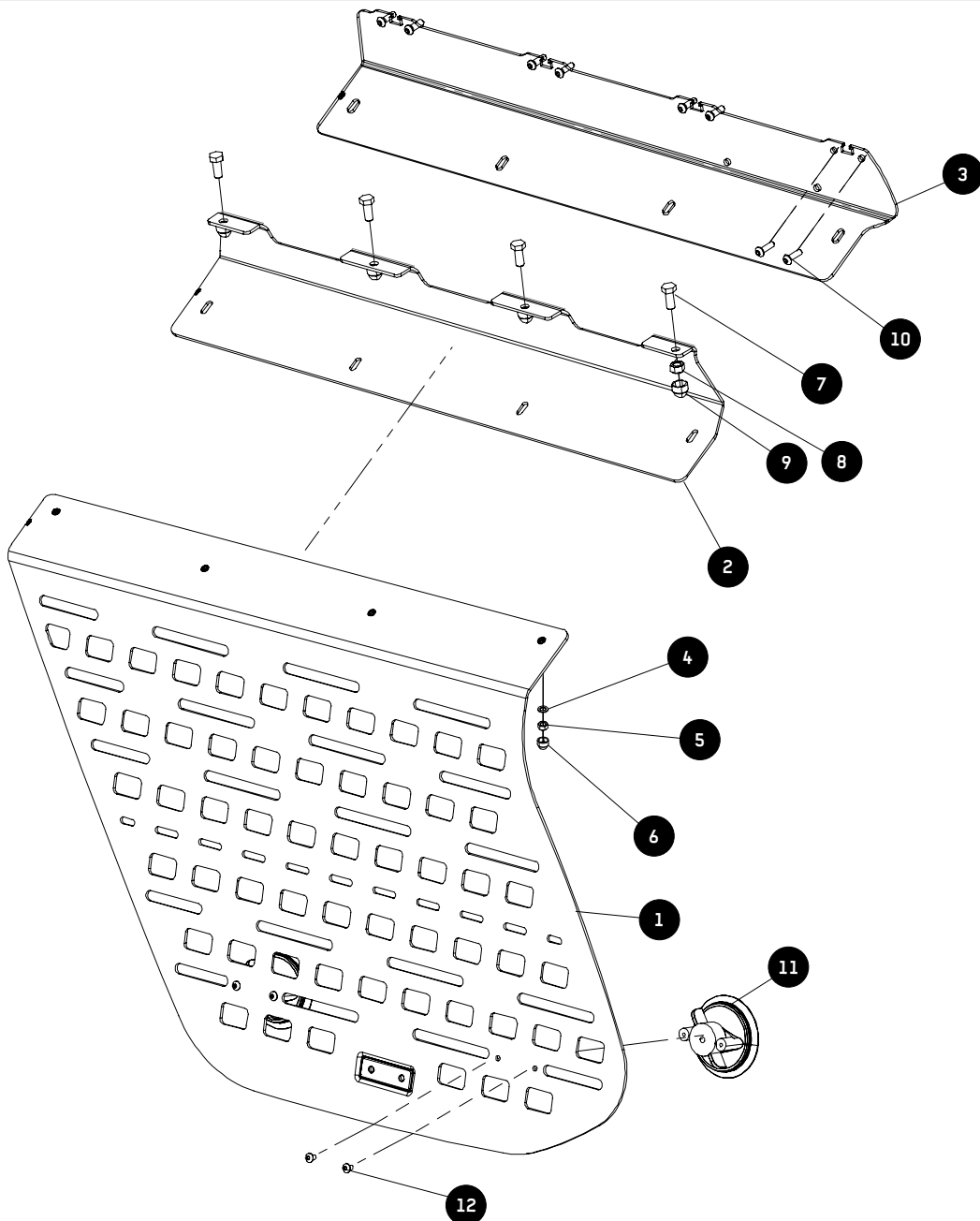
IN THE BOX

1	1 X	Toyota 4Runner 5th GEN LHS molle panel
2	1 X	SlimLine II Roof Rack Mounting Bracket
3	1 X	SlimSport Roof Rack Mounting Bracket
4	4 X	M6 x 12 x1 Flat Washer
5	4 X	M6 Nyloc Nut
6	4 X	M6 Nut Cap
7	4 X	M8 x 20 Hex Bolt
8	4 X	M8 Nyloc Nut
9	4 X	M8 Nut Cap
10	8 X	M6 x 20 Button Head Bolt
11	2 X	Suction Cup
12	4 X	#10 x 3/4" Screws

TOOLS NEEDED



FIGURE 1.1

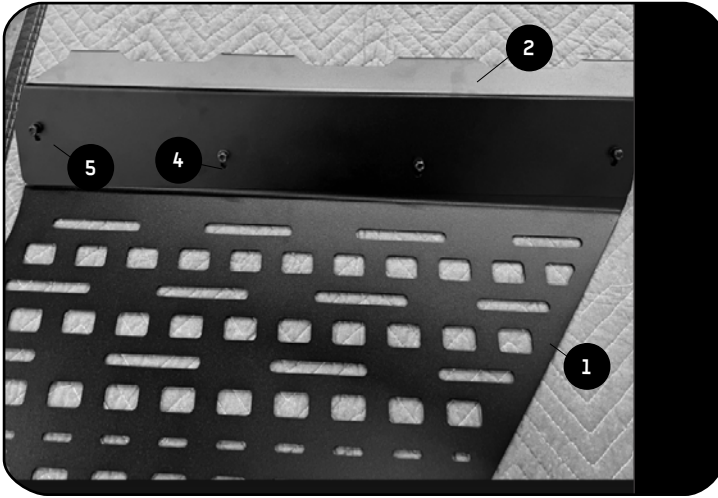


2

FIT AND SECURE

NOTE: FITMENT FOR SLIMLINE II ROOF RACK

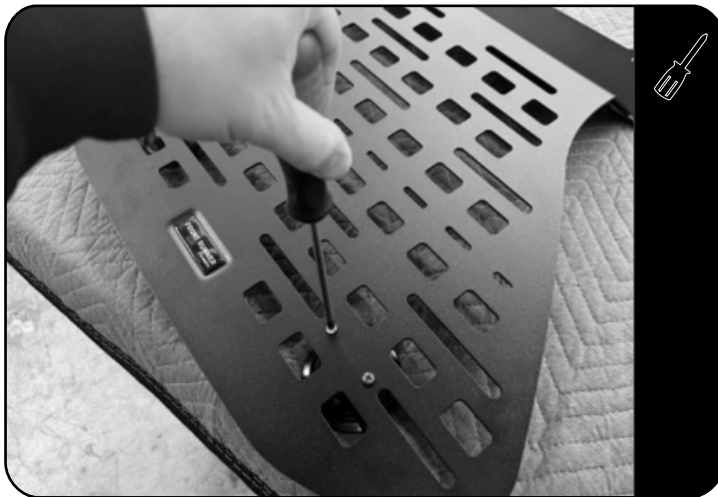
2.1



Loosely assemble the Slimline II Roof Rack Mounting Bracket (Item 2) to the Molle panel using M6x12x1 Flat washers and M6 Nyloc Nuts (Item 4 & 5).

DO NOT FULLY TIGHTEN.

2.2



Fit the Suction Cups (Item 11) to the Molle panel using #10 x 3/4" Screws (item 12). Do not overtighten.

2.3



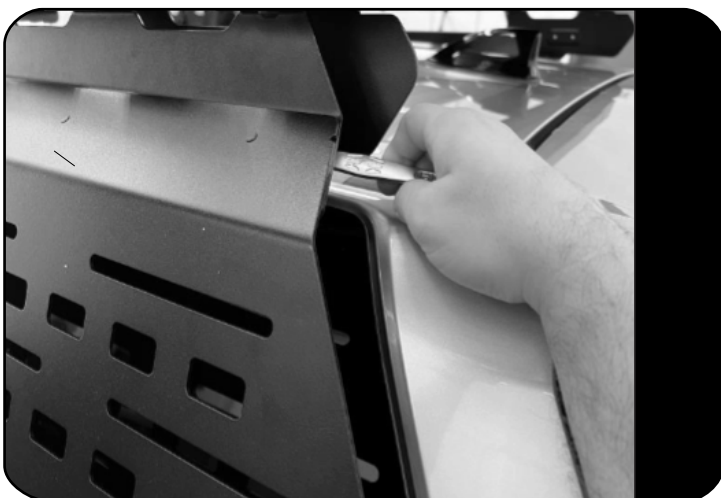
If you have side accessories installed they may need to be removed before continuing.

Loosen the LR corner and side profile bolts, remove the side profile and insert a M8X20 Hex Bolt (Item 7) into each of the 4 rear slats bottom T slot.



Clean the window with spirits/denatured alcohol to ensure the suction cups will have good adhesion to the window

2.4



Loosely assemble the Molle Panel assembly to the Hex Bolts fitted in 2.3 using M8 Nyloc Nuts (Item 8).

Do Not Fully Tighten.

2.5



Position the Molle Panel in the rack T slots until the Panel and suction caps are parallel to the side glass

When positioned firmly push on the panel to allow suction cups to adhere to the glass. Rotate the twist locks on the suction cups to secure in place

2.6



Fully Tighten the M6 Nyloc Nuts Fitted in 2.1 and place the M6 nut caps (Item 6) over the M6 Nyloc Nuts.

Fully tighten the M8 Nyloc Nuts fitted in 2.4 and place M8 Nut Caps (Item 9) over the M8 Nyloc Nuts.



Tightening Torque:

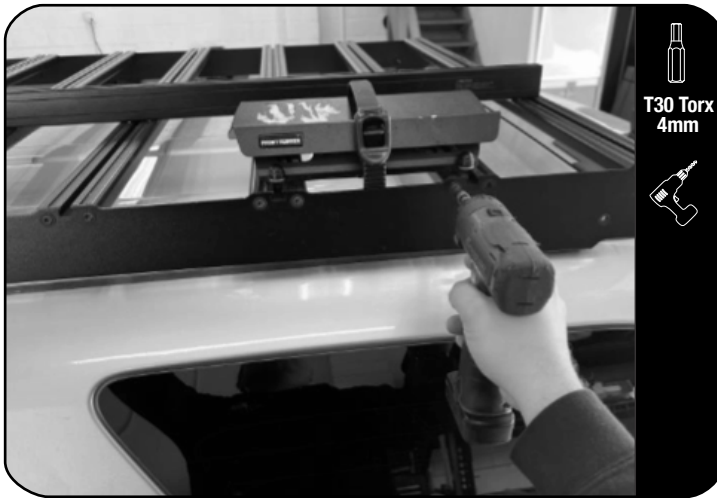
M6 : 8-10Nm / 5.9 ft lb - 7.38 ft lb



Tightening Torque:

M8 : 15-20Nm / 11.06 ft lb - 14.75 ft lb

3.1




T30 Torx
4mm


Using either a T30 Torx or 4mm Allen key (depending on the screw head type) . Remove the screws from the last four slats on the left hand side of your slimsport rack

3.2




T30 Torx
4mm



10mm


Use either a T30 Torx or 4mm Allen key (depending on the screw head type) and 10mm wrench to remove the two fasteners securing the stiffener bracket.

Keep the stiffener bracket safe for refitment.

3.3




T30 Torx
4mm


Fit the Slimsport Roof Rack Mounting Bracket (Item 3) to the foot rail and secure using either the Thread Forming screws removed in Step 3.1 or using M6x20 Button Head Screws (Item 10).



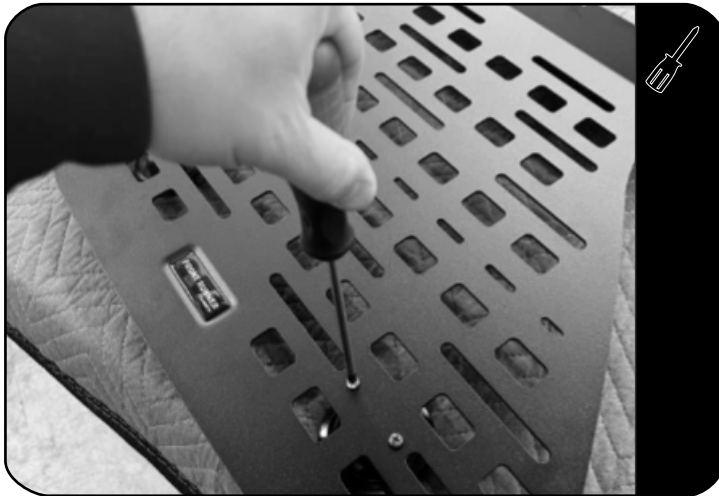
Apply a drop of Thread Locker on each of the M6x20 Button Head Bolts before securing the slats.

3

FIT AND SECURE

NOTE: FITMENT FOR SLIMSPORT ROOF RACK

3.4



Fit the Suction Cups (Item 11) to the Molle panel using #10 x 3/4" Screws (item 12). Do not overtighten.



Clean the window with spirits/denatured alcohol to ensure the suction cups will have good adhesion to the window

3.5



Loosley assemble the Molle panel to the Slimsport mounting Bracket fitted in 3.1 using M6 Flat washer and M6 Nyloc Nut (Item 4 & 5)
DO NOT FULLTY TIGHTEN.

3.6



Position the Molle Panel on the bracket slots until the panel and suction cups are parallel to the side glass.

When positioned firmly push on the panel to allow suction cups to adhere to the glass. Rotate the twist locks on the suction cups to secure in place.

2

FIT AND SECURE

2.4



 Fully Tighten the M6 Nyloc Nuts Fitted in 3.5 and place the M6 nut caps (Item 6) over the M6 Nyloc Nuts.



Tightening Torque:

M6 : 8-10Nm / 5.9 ft lb - 7.38 ft lb

4

FINISH

Congratulations! You did it. Take a step back and admire your work!

5

INSTALL OTHER VEHICLE AND RACK ACCESSORIES

Now's the time to visit your favorite Front Runner Dealer in person or online.

Be sure to tag us. We love to see our gear in action! #FrontRunnerOutfitters

Share your adventures on: 